

THE SOURCE

JANUARY 2024

NEW ARRIVALS

Mauro Marengo
Barolo's newest prodigy?

Le Vent des Jours
Biodynamic, No-Added-Sulfites Cahors

Slate in Ribeira Sacra

JANUARY

2024

The Source Imports is a fine wine import company, started in 2010, specializing in the representation of estates of notable significance within its respective region. The Source seeks to bring the highest quality of wines to California through a handful of channels. We work with Agents, Exporters and Importers as well as directly with the estates. It is our desire to find and bring to you the cleanest, free of flaws, varietally expressive and inspirational wines made available to us.

TABLE OF CONTENTS

France

Champagne	9-11
Loire Valley	11-15
Chablis & Burgundy	15-17
Beaujolais	17-20
Rhône Valley	20-21
Southwest France	21
Provence	22
Bordeaux	22
Corsica	22

Italy

Südtirol/Alto Adige	24
Lombardy	24-25
Piemonte	25-30
Emiglia Romangna	30
Friuli-Venezia-Giulia	30
Tuscany	31-32
Abruzzo	32
Calabria	34
Basilicata	34
Sicily	34

Portugal

36-39

Spain

41-46

Chile

48

Austria

50-52

Germany

54

California

56

Closeout Price List

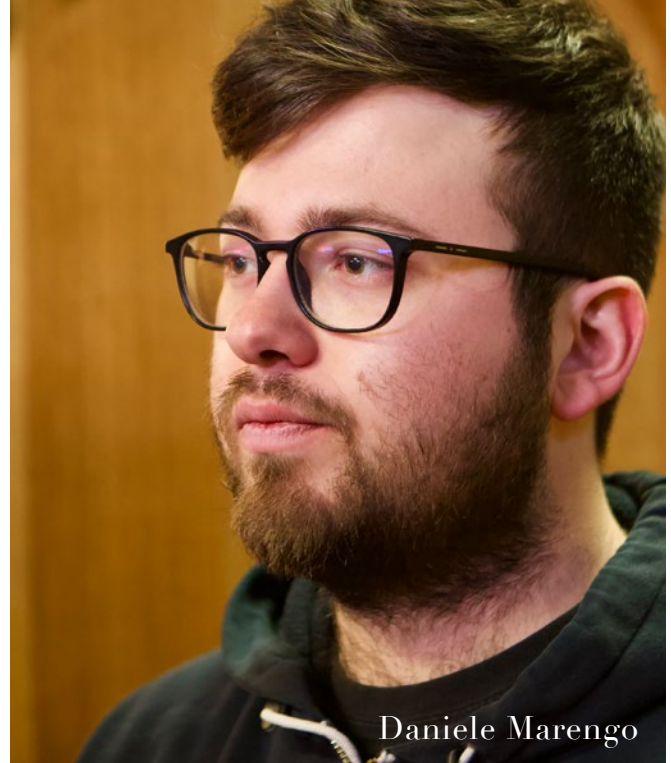
58

January Volume Discount Sale

59

NEW PRODUCER MAURO MARENGO, BAROLO

The secret to great winemaking is no secret at all. Every touch in the cellar can increase components or diminish them, and utilizing perfect grapes that are processed with the intention of highlighting the vineyard handling, the intricacy of the terroir and seasonal nuances requires not only doing as little as possible but also knowing exactly when to do what to achieve the desired result. Every compelling wine is designed by intuition, connection, talent, and the skill of its maker. Daniele Marengo's ability to realize his objectives to these ends is extraordinary.



Daniele Marengo



Grayish-Blue Sant'Agata Marl



Laurent Marre



NEW PRODUCER LE VENT DES JOURS, CAHORS

After twenty-five years as a sommelier, wine wholesaler and the owner of a Parisian wine bar, a forty-eight-year-old Cahors native, Laurent Marre, found himself in a hospital bed. Unexpected life-threatening conditions and four months confined in a hospital can change anyone's perspective. Once released, Laurent and his wife, Nathalie, began planning to return to Laurent's familial homeland. Since 2018, they raise horses (Nathalie's métier along with plowing the vineyards) and farm eight biodynamic hectares of vines on their 30-hectare, forest-surrounded plot on one of Cahors' geologically diverse highest altitude limestone plateaus.

PAYMENT

All Domestic Producers & Importers Extend 30 days Net Payment Terms

Credit applications must be completed and approved prior to delivery of wines

Discounts & allocated wines are not available to delinquent accounts

Accounts delinquent over 45 days past the shipping day will not be sold to until the account is brought to current.

Any account delinquent over 60 days will be placed on COD or post dated check terms

DELIVERY

Zephyr Express Delivery Service delivers Tuesday through Friday in most territories. Any orders submitted after 2pm will not be available for next day delivery in SoCal and 5pm for NorCal.

Not all domestic wines combine for delivery minimums. Please inquire with your broker as to which combine in your territory.

Delivery Minimum: Three cases minimum for FREE DELIVERY, for most territories. Per case delivery fees will apply for all orders less than 3 cases. Delivery fees are variable per territory. Please inquire with your broker to understand your territory fees.



Broken Case: Not available for A. Rafanelli. Broken cases will result in a \$2.50 charge per line item. You will not be charged broken case fees for allocated wines sold as broken cases.

DISCOUNTS

Discounts are not available to delinquent accounts.
All Producers Case discounts are on 12 (750ml) cases only

A. Rafanelli, Wenzlau & Whitcraft: Net pricing, Quantity and BTG discounts available - Please inquire

Imports: All prices are NET except where stated. Wine discounts indicated are applied on 3 cases of one item or 5 cases mixed.

SAMPLES

Many wines we represent are not available for sampling. Please inquire with your broker for sample availability.

Many of our rare and allocated wines are available at our tastings only.

CONTACTS

Ted Vance - Owner, Importer
ted@thesourceimports.com - 323.610.9091

Donny Sullivan - Owner, General Manager
donny@thesourceimports.com - 971.219.6071

Victoria Diggs - Office Manager
victoria@thesourceimports.com - 805.368.0707

Tracy Todo - Order Desk
orders@thesourceimports.com - 805.660.3508

Emily Flannagan - Accounts Payable
accounting@thesourceimports.com - 714.655.4070

Noah Chilton - National Sales Manager
noah@thesourceimports.com - 201.247.4857

Danny DeMartini - Northern California Sales
danny@thesourceimports.com - 650.996.0876

Marissa Payne - Northern California Sales
marissa@thesourceimports.com - 925.788.6338

JD Plotnick - Los Angeles Sales
jd@thesourceimports.com - 847.682.2759

Leigh Readey - Central Coast, Monterey, Carmel Sales
leigh@thesourceimports.com - 805.478.8546

Tyler Kavanagh - San Diego/Orange County Sales
tyler@thesourceimports.com - 760.815.8800

FRANCE



STÉPHANE ROUSSET
SAINT-JOSEPH
"CÔTES DES RIVOIRES"

CHARLOT-TANNEUX

VALLÉE DE LA MARNE - CHAMPAGNE

www.thesourceimports.com/producers/vincent-charlot/

Vincent Charlot, a man who resembles a blond James Dean with a cigarette hanging from his mouth, is one intense man. Vincent descends from a long lineage of family cooperatives. Passionate and eager to take on the challenge, he bought a press and took over the family business in 2001. With only four total hectares, in six communes with 33 parcels, Charlot has become a master of organic and biodynamic viticulture. To spend the afternoon with Charlot, means you will not only witness his remarkable knowledge of the complex microcosm that are his thriving vineyards, but also you will see the rich biodiversity that populates them, including various species of strawberries and carrots that grow wild, bees pollinating the lavender bushes and mushrooms that sprout between the vines as if to boast its healthy terroir. It is not only a visual experience, but a spiritual one as well.

				Frontline		Discounts	
				Case	Bottle	5%	10%
2016	Champagne, <i>Fruit de ma Passion</i> , Extra Brut	750	12	\$516.00	\$43.00	NET	NET
2017	Champagne, <i>Fruit de ma Passion</i> , Extra Brut	750	12	\$504.00	\$42.00	NET	NET
2018	Champagne, <i>Fruit de ma Passion</i> , Extra Brut	750	12	\$564.00	\$47.00	NET	NET
2016	Champagne, <i>1er Cru Cuveé Nicolas</i> , Extra Brut	750	12	\$576.00	\$48.00	NET	NET
2017	Champagne, <i>1er Cru Cuveé Nicolas</i> , Extra Brut	750	12	\$624.00	\$52.00	NET	NET
2017	Champagne, <i>1er Cru Cuveé Elia</i> , Blanc de Blancs, Extra Brut	750	12	\$624.00	\$52.00	NET	NET
2015	Champagne, <i>l'Or des Basses Ronces</i> , Extra Brut	750	12	\$864.00	\$72.00	NET	NET

PASCAL MAZET

MONTAGNE DE REIMS - CHAMPAGNE

www.thesourceimports.com/producers/pascal-mazet/

Catherine and Pascal Mazet established their domaine in 1981 and in 2009 began organically farming their two and a half hectares of premier cru in the Montagne de Reims communes Chigny-les-Roses and Ludes, and the grand cru, Ambonnay. Their son Olivier joined in 2019 and incorporated agroforestry to further improve nature's interaction with their mildly steep hills of chalk, clay and sand. Natural fermentations and sur lie aging take place in old oak barrels over fifteen months. Bottle maturation on lees lasts for a minimum of five years and the dosage is specific for each wine.

				Frontline		Discounts	
				Case	Bottle	5%	10%
NV	Champagne, Premier Cru, Brut, <i>Nature</i>	750	12	\$624.00	\$52.00	NET	NET
NV	Champagne, Premier Cru, Brut, <i>Unique</i>	750	12	\$648.00	\$54.00	NET	NET
NV	Champagne, Premier Cru, Brut, <i>Originel</i>	750	12	\$744.00	\$62.00	NET	NET
2015	Champagne, Premier Cru, Brut, <i>Millesime</i>	750	12	\$792.00	\$66.00	NET	NET

PONSON

MONTAGNE DE REIMS - CHAMPAGNE

www.thesourceimports.com/producers/champagne-ponson/

The young and idealistic Maxime Ponson's organic wines are unique to his taste and demonstrate his strong belief in Pinot Meunier, the backbone and structure of most of his wines. His preference is for more ripe grapes and is not concerned about potential acidity losses in warmer years because the wines have other components that bring balance. He and his younger brother, Camille, work their family's vineyards in La Petite Montagne, a sub-section of Champagne's Montagne de Reims, located west of Reims. La Petite Montagne is home to some regional luminaries and top talents. He explained, "I'm sure that I don't produce the best wine in the world. But I produce my wine, and they have my identity and the identity of my terroirs."

				Frontline		Discounts	
				Case	Bottle	5%	10%
NV	Champagne, Brut, <i>Prestige Tradition</i> (Disg 7.22)	750	12	\$384.00	\$32.00	NET	NET

ELISE DECHANNES

CÔTES DE BARS - CHAMPAGNE

www.thesourceimports.com/producers/elise-dechannes/

Elise Dechannes runs a petite domaine under biodynamic culture in Les Riceys, two hamlets (Ricey-Bas and Ricey-Haut) that share a small appellation in the south of Champagne known for its rosé, Rosé des Riceys, just an hour drive northeast of Chablis. The character of the Pinot Noir in this region is exceptional and unique. Through her range (almost entirely composed of Pinot Noir based Champagnes and one still wine rosé) the through line of deep but elegant sappiness in the palate and ethereal, wildly complex aromas seem to truly come from this particular place. All of her Champagnes have no dosage. Her Rosé des Riceys is a well-worth-it, juicy and tremendously complex and delicious rosé with real stuffing; it alone brings greater meaning to rosé. Champagne Essentielle is made entirely from Pinot Noir from Les Riceys and her Champagne Chardonnay Brut Nature is a great view into her more distinguished wines.

				Frontline		Discounts	
				Case	Bottle	5%	10%
2019	Champagne, <i>Essentielle</i>	750	12	\$600.00	\$50.00	NET	NET
2020	Champagne, <i>Essentielle</i>	750	12	\$660.00	\$55.00	NET	NET
2017	Champagne, <i>Liberté - 6 bottles left</i>	750	12	\$900.00	\$75.00	NET	NET
2018	Champagne, <i>Liberté - 1 case left</i>	750	12	\$936.00	\$78.00	NET	NET
2018	Champagne, Chardonnay	750	12	\$900.00	\$75.00	NET	NET
2019	Champagne, <i>Absolue Terre</i>	750	12	\$984.00	\$82.00	NET	NET
2019	Champagne, <i>Absolue Grés</i>	750	12	\$984.00	\$82.00	NET	NET

TAISNE RIOCOUR

CÔTES DE BARS - CHAMPAGNE

www.thesourceimports.com/producers/taisne-riocour/

Established in Champagne in 1837, the de Taisne family decided to bottle their own wines in 2014. Located in Champagne's most southerly region, the Aube's Les Riceys, known as the Barséquanais, is just on the border of the Côte d'Or. Pinot Noir is the focus (as well a little Chardonnay); it's grown on rocky calcareous clay and silt topsoil, on a bedrock of Jurassic limestone marl and calcareous mudstones with a more blocky geometric shape than Chablis' flaky, friable, fossil-rich Kimmeridgian limestone marls. All wines are hand-harvested and fermented in 25hl-200hl steel vats for 10-15 days with the assistance of neutral Champagne yeasts when needed, and they undergo complete malolactic fermentation. Sulfites are added during pressing, at the end of malolactic, and again at disgorgement, with a Total SO₂ of 40-60 mg/L. The wines are then filtered before aging in bottle.

				Frontline		Discounts	
				Case	Bottle	5%	10%
NV	Champagne, <i>Blanc de Noirs</i> , Brut	750	12	\$540.00	\$45.00	NET	NET
NV	Champagne, <i>Grande Reserve</i> , Brut	750	12	\$492.00	\$41.00	NET	NET *

ERIC COLLINET

CÔTES DE BARS - CHAMPAGNE

www.champagnebio-ericcollinet.com/

Eric Collinet moved to Bragelogne-Beauvoir in 1987 from Limousin, a cow town famous for a breed of cattle with the same name. Twenty minutes by car from the center of Les Riceys, one of Champagne's southernmost regions on the Côte des Bar, famous for its Pinot Noir bubbles and unique appellation still rosé, Rosé des Riceys, he has 2.25 hectares of Pinot Noir and Chardonnay and land for truffles. Agroforestry, organic (certified), and biodynamic practices underpin "all of my actions: the respect of the seasons, nature and its rhythm; to listen to nature quietly and with patience to look at it and accompany it."

				Frontline		Discounts	
				Case	Bottle	5%	10%
2014	Champagne, Extra Brut, <i>Temporis</i> (Disg 11.21)	750	12	\$588.00	\$49.00	NET	NET

CHEVREUX-BOURNAZEL

LA VALLÉE DE LA MARNE - CHAMPAGNE

www.thesourceimports.com/producers/la-parcelle/

Among the multitude of producers who have been looking beyond Champagne's initial grower-producer movement – a movement of growers that began to break free of the big houses and to produce their own wines, typically focused on single plots – are two young and enthusiastic winemakers, Stéphanie Chevreux and Julien Bournazel, of Champagne La Parcelle. Since their debut vintage in 2012, they have been laser-focused on a more homeopathic approach, not only in the vineyards, but in the cellar too. Upon the acquisition of their first vineyard, a 0.4 ha parcel on the Côteau du Barzy, Stéphanie and Julien immediately began the conversion to biodynamic practices, and to the naked eye it's evident their land is happy and thriving. The cover crop is verdant with an array of wild thyme, carrots, tomatoes, fruit trees and all things life.

				Frontline		Discounts	
				Case	Bottle	5%	10%
2018	Champagne, <i>La Connigis - 1 case left</i>	750	6	\$456.00	\$76.00	NET	NET
2018	Champagne, <i>La Capella</i>	750	6	\$720.00	\$120.00	NET	NET
2018	Champagne, <i>Le Bouc</i>	750	6	\$624.00	\$104.00	NET	NET
2018	Champagne, <i>Coteaux Champenois</i>	750	6	\$516.00	\$86.00	NET	NET

ALEXANDRE DÉRAMÉ (MORANDIÈRE)

MUSCADET - VALLÉE DE LA LOIRE

www.thesourceimports.com/producers/alexandre-derame/

After six years of enology school in Nantes, the humble Alexandre Déramé took over his family estate winery. Although his total production is medium-sized, his yields are among the lowest in Muscadet; his *Vieille Vignes* bottle quantities are minuscule. Organic conversion began in 2023 with the objective of having the entirety certified within five years. Morandière is a tiny commune in gently rolling hills in Mouzillon, one of the most highly regarded wine villages in Muscadet. Mouzillon is distinctive for its soils high in concentration of gabbro (a metallic-flecked, pale green and black, hard igneous rock developed through slow cooling of basaltic magma) with loamy soil of orange-colored silex and quartz-like rocks. This unique rock imparts the wines with tremendous power and tension.

				Frontline		Discounts	
				Case	Bottle	5%	10%
2020	Muscadet Sévre et Maine, <i>La Morandière, Sur Lie - 5 bottles left</i>	750	12	\$144.00	\$12.00	\$11.40	\$10.80
2022	Muscadet Sévre et Maine, <i>La Morandière, Sur Lie</i>	750	12	\$144.00	\$12.00	\$11.40	\$10.80
2022	Muscadet Sévre et Maine, <i>Domaine du Moulin, Sur Lie</i>	750	12	\$144.00	\$12.00	\$11.40	\$10.80
2017	Muscadet Sévre et Maine, <i>La Roches Gaudinieres, Vieilles Vignes, Sur Lie</i>	750	12	\$192.00	\$16.00	\$15.20	\$14.40
2022	Pinot Noir Rosé, <i>La Morandière</i>	750	12	\$132.00	\$11.00	\$10.45	\$9.90

VINCENT BERGERON

MONTLOUIS-SUR-LOIRE - VALLÉE DE LA LOIRE

www.thesourceimports.com/product-category/france/loire-valley/vincent-bergeron/

On the rolling hills and floodplains of the Loire River's Montlouis-sur-Loire, the humble and gentle Vincent crafts his finely tuned certified organic Chenin Blanc (still and sparkling) and Pinot Noir wines from 3.4ha of vineyards grown on limestone bedrock, perruches (fossils, lithified clay, flint/silex), sandstone, clay, and limestone rock topsoil. These "natural" wines are spontaneously fermented and aged in French oak barrels (some in fiberglass) – most without any addition of sulfites. With his concession to nature and commitment to honor the season, sans maquillage, sin compromise, he sets his wines on a direct course, showcasing each season's gifts and challenges, allowing his wines to freely express the mark of their birth year. Warm vintages (like 2020) taste of a season's richer fruits and softer palate while still being delicate and complex. Cold years (like 2021) are brighter, fresher, more tense and rapier-sharp with a gentle and welcome stab.

				Frontline		Discounts	
				Case	Bottle	5%	10%
2020	Vin de France, <i>Certains l'aiment Sec</i> (Sparkling Chenin)	750	12	\$288.00	\$24.00	\$22.80	\$21.60
2021	Vin de France, <i>Certains l'aiment Sec</i> (Sparkling Chenin)	750	12	\$348.00	\$29.00	NET	NET
2020	Vin de France, <i>Matin Midi et Soir</i> (Chenin Blanc)	750	12	\$336.00	\$28.00	NET	NET
2021	Vin de France, <i>Maison Marchandelle</i> (Chenin Blanc)	750	12	\$420.00	\$35.00	NET	NET
2021	Vin de France, <i>Un Rouge Chez Les Blancs</i> (Pinot Noir)	750	12	\$396.00	\$33.00	NET	NET

VALLÉE MORAY

MONTLOUIS-SUR-LOIRE - VALLÉE DE LA LOIRE

www.thesourceimports.com/producers/domaine-vallee-moray/

Hervé Grenier purchased Domaine de la Vallée Moray in 2014 from Husseau and Nouy plots from Domaine Les Loges de la Folie. His certified organic 10 hectares (six of Chenin Blanc, the remainder primarily Pinot Noir and Gamay) are in Montlouis-sur-Loire with soils of perruches (fossils, lithified clay, flint/silex), sand, and clay, atop a bedrock of tuffeau limestone. Classified as AOC Montlouis-sur-Loire or Vin de France, he harvests by hand from a range of old vines (50-100 years old) and ferments naturally. The wines spend varying lengths of time sur lie in old casks, with no sulfur additions or filtration.

				Frontline		Discounts	
				Case	Bottle	5%	10%
2020	Vin de France Blanc, <i>Aubepine</i> (Chenin Blanc)	750	12	Allocated - November Arrival			
2019	Vin de France Blanc, <i>Cailloutis</i> (Chenin Blanc)	750	12	Allocated - November Arrival			
2020	Vin de France Blanc, <i>Cailloutis</i> (Chenin Blanc)	750	12	Allocated - November Arrival			
2015	Vin de France Rouge, <i>Côt Libri</i> (Malbec)	750	12	\$300.00	\$25.00	\$23.75	\$22.50

ARNAUD LAMBERT

SAUMUR - VALLÉE DE LA LOIRE

www.thesourceimports.com/producers/arnaud-lambert/

The rise of Arnaud Lambert is no surprise. Since our wines from the 2010 vintage, his potential was obvious – not only with what skills he already possessed, but how clear it was that he would sharpen them and grow into the spectacular talent he has become. What's most incredible about Arnaud is his ability to churn out such quality with nearly twenty different cuvées rendered from more than forty hectares of vineyards. His wines are spectacularly etched jewels, short on pretension and confection, and long on harmonious depth and purity. Everything from his entry-level reds whites is astounding within its price range, and the upper class of the range developed for more time in the cellar are striking and warrant exploration for any serious Loire Valley wine enthusiast. Domaine Arnaud Lambert, a relatively new name, was established through the merger of two labels in 2017: Domaine de Saint-Just and Château de Brézé.

				Frontline		Discounts	
				Case	Bottle	5%	10%
NV	Crémant de Loire Blanc	750	12	\$216.00	\$18.00	\$17.10	\$16.20
NV	Crémant de Loire Rosé	750	12	\$216.00	\$18.00	\$17.10	\$16.20
2022	Saumur Blanc, <i>Les Parcelles</i>	750	12	\$216.00	\$18.00	\$17.10	\$16.20
2021	Saumur Blanc, <i>Les Perrieres</i>	750	12	\$300.00	\$25.00	\$23.75	\$22.50
2022	Saumur Blanc, <i>Midi</i>	750	12	\$252.00	\$21.00	\$19.95	\$18.90
2018	Saumur Blanc, <i>Montsoreau</i>	750	12	\$228.00	\$19.00	\$18.05	\$17.10
2020	Saumur Blanc, <i>Clos David</i>	750	12	\$372.00	\$31.00	NET	NET
2019	Saumur Blanc, <i>Clos de la Rue</i>	750	12	\$576.00	\$48.00	NET	NET
2019	Saumur Blanc, <i>Brézé Bourguenne - 7 bottles left</i>	750	12	\$636.00	\$53.00	NET	NET
2021	Saumur Champigny, <i>Les Terres Rouge</i>	750	12	\$240.00	\$20.00	\$19.00	\$18.00
2022	Saumur Champigny, <i>Les Terres Rouge</i>	750	12	\$240.00	\$20.00	\$19.00	\$18.00
2019	Saumur Champigny, <i>Clos Moleton - 1 bottle left</i>	750	12	\$456.00	\$38.00	NET	NET
2022	Saumur Rouge, <i>Clos Mazurique</i>	750	12	\$228.00	\$19.00	\$18.05	\$17.10
2019	Saumur Champigny, <i>Clos de l'Etoile</i>	750	12	\$576.00	\$48.00	NET	NET

LA GIRAUDIÈRE

SAUMUR - VALLÉE DE LA LOIRE

www.giraudiere-breze.fr

Third-generation winegrower Fabrice Esnault has more than 20 hectares in Saumur-Champigny's municipalities of Montsoreau and Turquant, and Saumur's most famous commune, Brézé. Devoid of all herbicides and pesticides and sustainably farmed, the vines average 35 years old, the oldest being about 75. The focus is on Chenin Blanc and Cabernet Franc, though he also grows Chardonnay, Grolleau Gris, and Grolleau Noir. Brézé vineyards are tuffeau limestone, clay and sand, and Saumur-Champigny has deeper clay top soils on tuffeau bedrock. Selected local yeasts are employed when needed, and the whites are fermented and aged in fiberglass and old oak barrels without malolactic fermentation, filtered before bottling, and sometimes fined. Saumur-Champignys ferment for three weeks in fiberglass with gentle extractions at low temps (~20°C), followed by eight months in old barrels with light filtration or fining, if needed.

				Frontline		Discounts	
				Case	Bottle	5%	10%
2021	Saumur Blanc - 2 cases left	750	12	\$216.00	\$18.00	\$17.10	\$16.20
2018	Saumur Champigny, <i>Les Meuniers</i>	750	12	\$216.00	\$18.00	\$17.10	\$16.20

FORTERESSE DE BERRYE

SAUMUR - VALLÉE DE LA LOIRE

www.thesourceimports.com/producers/forteresse-de-berrye/

Forteresse de Berrye's expressive and terroir-focused wines are crafted in a simple and direct way. Its new owners, Gilles, an agronomist and agricultural engineer (among the many métiers of his diverse professional life), and his wife, Sandra, have eliminated the use of all chemical applications in 2019 and began organic culture in 2021; they expect certification by 2024. They began to replace the missing pieds (vine stocks) with high-quality oriented biotypes and planted six hectares of trees on the 26-hectare property (12.5ha of vines) to improve the overall biodiversity of the landscape in support of the forest-capped hill. For them, agroforestry is crucial for repairing the land, though luckily for them (and us), the property's many parcels were well-tended and not destroyed by excessive use of synthetic products prior to their arrival. Gilles says that the land was in quite good shape overall due to the few annual treatments in this low precipitation and low humidity area of Saumur, perhaps one of the driest areas of the Loire Valley overall due to the rain shadow of the Armorican Massif to the west. Many of the old Chenin Blanc bottles left behind in the deeply quarried tuffeau limestone caves by its former owner drink well, with only the quality of the cork being the determining factor.

				Frontline		Discounts	
				Case	Bottle	5%	10%
2021	Petillant Naturel Rosé, <i>Pet Fort</i>	750	12	\$252.00	\$21.00	\$19.95	\$18.90
2020	Saumur, Blanc, <i>Coeur pour Coeur</i>	750	12	\$228.00	\$19.00	\$18.05	\$17.10 *
2020	Saumur, Rouge, <i>Corps pour Corps</i>	750	12	\$192.00	\$16.00	\$15.20	\$14.40

NICOLAS POINTEAU

CHINON - VALLÉE DE LA LOIRE

www.thesourceimports.com/producers/nicolas-pointeau/

Nicolas Pointeau works alongside his wife Marielle on their Chinon vineyard terraces composed of deep river gravel beds, with some further away from the Loire Valley on tuffeau limestone bedrock terraces with loamier soils than what would typically be found in Saumur-Champigny further to the west. Their entire vineyard stable of Cabernet Franc and a smaller quantity of Chenin Blanc is organically certified and their cellar practices are low-tech and straightforward with natural fermentations and aging in a mix of steel or very old 228-L French oak barrels.

				Frontline		Discounts	
				Case	Bottle	5%	10%
2021	Chinon, Blanc	750	12	\$204.00	\$17.00	\$16.15	\$15.30
2020	Chinon, Rouge, <i>Tradition</i>	750	12	\$168.00	\$14.00	\$13.30	\$12.60
2021	Chinon, Rouge, <i>Tradition</i>	750	12	\$168.00	\$14.00	\$13.30	\$12.60
2020	Chinon, Rouge, <i>Les Tonnelieres</i>	750	12	\$192.00	\$16.00	\$15.20	\$14.40
2020	Chinon, Rouge, <i>Vieilles Vignes</i>	750	12	\$204.00	\$17.00	\$16.15	\$15.30

FRANÇOIS CROCHET

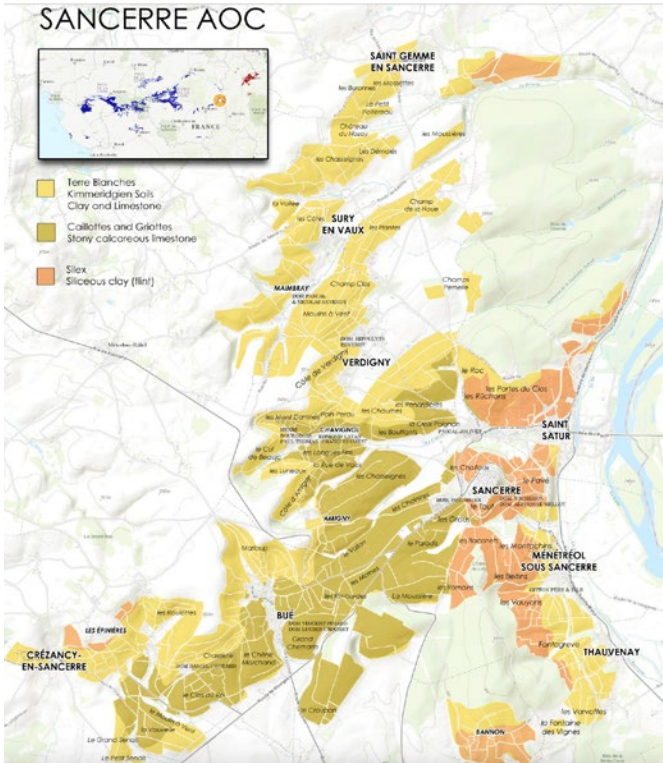
SANCERRE - VALLÉE DE LA LOIRE

www.thesourceimports.com/producers/francois-crochet/

Meeting François for the first time reveals an intense but shy vigneron. Once asked a question about his wines, his bright blue laser eyes dig in and his mouth moves a mile a minute. François graduated from the famous enology school in Beaune, France. After school, he cut his teeth by working at Domaine Bruno Clair. François took over his father's winery not too long ago and has been turning heads everywhere, first in France and now here. He is one of the first to pick in Sancerre so the acidity of his wines rage, without the green notes. The Sancerre region sits on top of a series of hills and small valleys that were once under the ocean. The ocean deposited all sorts of calcium rich shells from ancient sea-life. In the case of Sancerre, the rock and soil is a mixture of limestone marl, chalk, flint and variations of light to heavy clay, giving a broad range of style amongst the appellation.

				Frontline		Discounts	
				Case	Bottle	5%	10%
2021	Sancerre, Rosé	750	12	\$288.00	\$24.00	\$22.80	\$21.60
2022	Sancerre, Rosé	750	12	\$288.00	\$24.00	\$22.80	\$21.60
2022	Sancerre, Blanc	750	12	\$348.00	\$29.00	NET	NET
2016	Sancerre, Rouge - 3 cases left	750	12	\$300.00	\$25.00	\$23.75	\$22.50
2020	Sancerre, Rouge	750	12	\$360.00	\$30.00	NET	NET

Map credit to Fernando Beteta



SANCERRE LIMESTONE AND SILEX

Sancerre’s main bedrock types are mainly composed of silex and calcareous rock (limestone and marl), both sedimentary in nature but very different in composition. At the top of the picture below is silex and at the bottom, limestone. Silex (“chert” in English) is composed of silica, whereas limestone is calcium carbonate. Silex is hard as hell and doesn’t offer much nutrition to the vines to mine compared to limestones which tend to be more generous because of their softness and ease at which they break down. Both silex and limestone come from marine sediments but have different origins. Silex comes from remains of phytoplankton with siliceous skeletons, like diatoms, while Sancerre’s limestone/marl come from a wide variety of marine organisms but with calcareous skeletons with the three main units *terres blanches* made from Kimmeridgian Marl (as Chablis), *griottes*, made of a fine-grained and porous limestone (chalk; as Champagne), and *caillottes* made of soft Kimmeridgian limestone.



CHÂTEAU DE TRACY

POUILLY-FUMÉ - VALLÉE DE LA LOIRE

www.chateau-de-tracy.com

The renowned Pouilly-Fumé estate, Château de Tracy, is one of France's most historic and has been owned by the same family for more than six hundred years. The estate vineyards were replanted in the 1950s with massal selections from their vineyards suggested by Maxime Bourret, the château's wine director, to be the oldest DNA of Sauvignon Blanc known in the Loire Valley. The culture in the vineyards is done with organic methods and treatments without certification due to disagreements concerning the overall lack of thorough examination by the governing bodies who confer these credentials. Work in the cellar is done with the intention to highlight their clay-rich, kimmeridgian marl and silex bedrock terroirs. The first Pouilly-Fumé in the range, "Mademoiselle T," is made in a more fruity fashion, while the "Château de Tracy" is more serious and maintains a greater depth of complexity. The "Haute-Densité" is from a kimmeridgian marl and clay vineyard with 17,000 vines per hectare (it's now illegal to plant so many vines per hectare), and it's a wine of magnitude and core strength. The recent addition of Tracy & Cie wines to their range is worthy of exploration from this singular estate also on kimmeridgian marl bedrock and clay topsoil.

				Frontline		Discounts	
				Case	Bottle	5%	10%
2021	Pouilly Fumé Blanc, <i>Mademoiselle de T</i>	375	12	\$204.00	\$15.69	NET	NET
2019	Pouilly Fumé Blanc, <i>Haute Densité</i>	750	6	\$360.00	\$60.00	NET	NET
2017	Pouilly Fumé Blanc, <i>101 Rang</i>	750	6	\$528.00	\$88.00	NET	NET
2020	Menetou-Salon Rouge, (Tracy & Cie)	750	12	\$240.00	\$20.00	\$19.00	\$18.00 *

JEAN COLLET

CHABLIS - BOURGOGNE

www.thesourceimports.com/producers/jean-collet/

At age twenty-one, Romain Collet took over the entire estate and began to make decisions in the cellar. His father, Gilles, was forced into early retirement due to nerve damage in his leg and back. Immediately upon taking the reins, Romain began to experiment with organic and biodynamic farming as well as using natural yeasts. His relentless desire for improvement powers the future of Collet, which continues to inch closer with each vintage toward the elite of Chablis. The Collet style finds themselves right in the middle of two schools of thought regarding Chablis. One advocates for stainless steel tank aging out of the belief that the purity of terroir is best expressed unadulterated by oak, and the other is based around the needs of oak to soften its taut acidic structure and to sculpt wines that are grown in deeper clay soils. The Collets compromise by using older wood barrels in their higher end wines grown on richer soils and stainless steel with their most mineral and precise wines.

				Frontline		Discounts	
				Case	Bottle	5%	10%
2021	St. Bris	750	12	\$228.00	\$19.00	\$18.05	\$17.10
2022	Chablis	750	12	\$288.00	\$24.00	\$22.80	\$21.60
2021	Chablis, <i>1er Cru Foret</i>	750	12	\$384.00	\$32.00	NET	NET
2021	Chablis, <i>1er Cru Butteaux</i>	750	12	\$384.00	\$32.00	NET	NET
2021	Chablis, <i>1er Cru Montmains</i>	750	12	\$384.00	\$32.00	NET	NET
2021	Chablis, <i>1er Cru Montee de Tonnerre</i>	750	12	\$384.00	\$32.00	NET	NET
2021	Chablis, <i>1er Cru Vaillons</i>	750	12	\$384.00	\$32.00	NET	NET
2021	Chablis, <i>Grand Cru, Valmur</i>	750	12	\$744.00	\$62.00	NET	NET

CHRISTOPHE ET FILS

CHABLIS - BOURGOGNE

www.thesourceimports.com/producers/domaine-christophe-et-fils/

Sebastien Christophe is the man of mystery in Chablis. He comes from nearly nowhere and has quietly been climbing the ladder of Chablis stars. His winery is out of town and next to Petit Chablis vineyards that are upslope from the Grand Crus and a few of the famous premier crus he works with. Chablis can be a wine that expresses its terroir more clearly than any other region in the world. The winemaking choices certainly influence the impression of the wine but they never really lose that unmistakable Chablisienne character imprinted by its special limestone soils, the Chardonnay grape and tense acidity that is encouraged by a cool continental climate.

				Frontline		Discounts	
				Case	Bottle	5%	10%
2022	Petit Chablis	750	12	\$252.00	\$21.00	\$19.95	\$18.90
2022	Chablis	750	12	\$288.00	\$24.00	\$22.80	\$21.60
2021	Chablis, <i>1er Cru Fourchaume - 1 case left</i>	750	12	\$468.00	\$39.00	NET	NET
2021	Chablis, <i>1er Cru Mont de Milieu - 1 case left</i>	750	12	\$480.00	\$40.00	NET	NET

THIERRY RICHOUX

IRANCY - BOURGOGNE

www.thesourceimports.com/producers/thierry-richoux/

Once in a great while you stumble on a hidden gem, even one that has been in plain sight for decades. My first meeting with Thierry was one of my most eye-opening experiences. He is gentle, thin and soft-spoken with amazingly powerful hands that look like they could crush you with very little effort. This gorgeous village of Irancy is tucked in at the bottom of a very small amphitheater about 20 minutes from the center of Chablis. It shares the same basic geology as Chablis: Portlandian limestone on the upper sections and Kimmerigeian limestone inside of the sloped areas. Irancy is a special climate for Pinot Noir because of its horseshoe shaped amphitheater that faces south, west and north and holds in enough heat to just barely do the job.

				Frontline		Discounts		
				Case	Bottle	5%	10%	
NV	Cremant de Bourgogne	750	12	\$312.00	\$26.00	NET	NET	*
2017	Irancy, Rouge, <i>Les Cailles</i>	750	12	\$396.00	\$33.00	NET	NET	
2018	Irancy, Rouge, <i>Veaupessiot - 6 bottles left</i>	750	12	\$396.00	\$33.00	NET	NET	
2015	Irancy, Rouge, <i>Palotte</i>	750	12	\$564.00	\$47.00	NET	NET	
2012	Irancy, Rouge, <i>Veaupessiot</i>	1500	6	\$450.00	\$75.00	NET	NET	

DAVID DUBAND

CÔTE DE NUITS - BOURGOGNE

www.thesourceimports.com/producers/david-duband/

Much like his brisk improvement in David's English, the quality and integrity of his wines and vineyards have advanced at a rapid pace since he took over in 1991, while still attending winemaking school. In 1999 he abandoned conventional farming and by 2006 was completely organic. An overhaul of his vineyard protocol was a dramatic step that allowed an evolution in his winemaking style, which has become more sensitive, more precise, in an attempt to articulate a more intimate engagement with his terroir. Over the last five vintages or so, he extracts less, uses less oak and has increased his percentage of whole cluster fermentations. These changes and the beauty of the plots he purchased from Jacky Truchot (now-retired, but in his day a vigneron with terrific collection of very old vineyards and a cult following of Burgundy lovers), David's wines are turning the heads of both his colleagues in Burgundy and wine lovers around the world.

Coteaux Bourgogne, Rouge	750	12	Allocated - Please Inquire
Bourgogne, Rouge	750	12	Allocated - Please Inquire
Côtes de Nuits Village, Rouge	750	12	Allocated - Please Inquire
Hautes Côtes de Nuits, Rouge, <i>Louis Auguste</i>	750	12	Allocated - Please Inquire
Gevrey Chambertin	750	12	Allocated - Please Inquire
Morey Saint Denis, Rouge	750	12	Allocated - Please Inquire
Morey Saint Denis, <i>1er Cru Clos Sorbe</i>	750	12	Allocated - Please Inquire
Chambolle Musigny	750	12	Allocated - Please Inquire
Chambolle Musigny, <i>1er Cru Sentiers</i>	750	12	Allocated - Please Inquire
Chambolle Musigny, <i>1er Cru Gruenchers</i>	750	12	Allocated - Please Inquire
Vosne Romanée	750	12	Allocated - Please Inquire
Nuits-Saint-Georges	750	12	Allocated - Please Inquire
Nuits-Saint-Georges, <i>1er Cru Thorey</i>	750	12	Allocated - Please Inquire
Nuits-Saint-Georges, <i>1er Cru Pruliers</i>	750	12	Allocated - Please Inquire
Èchezeaux, Grand Cru	750	12	Allocated - Please Inquire
Clos Vougeot, Grand Cru	750	12	Allocated - Please Inquire
Clos de la Roche, Grand Cru	750	12	Allocated - Please Inquire
Charmes Chambertin, Grand Cru	750	12	Allocated - Please Inquire
Latricières Chambertin, Grand Cru	750	12	Allocated - Please Inquire
Chambertin, Grand Cru	750	12	Allocated - Please Inquire

RODOLPHE DEMOUGEOT

CÔTE DE BEAUNE - BOURGOGNE

www.thesourceimports.com/producers/rodolphe-demougeot/

After starting in 1992, Rodolphe has amassed 8 hectares of vines in the Côte de Beaune and has upped the ante on everything he does. There are no chemical treatments for herbicides, pesticides or fertilizers and he follows the rhythm of the lunar cycle when moving his wines and making picking decisions. He plows his vineyards by horse and tractor to aerate the soils and to take out grasses and weeds. He doesn't carry the superstar terroirs in his range of wines, but the energy put toward getting the best out of his humble holdings is impressive and they deliver well above what is expected, even from the two important villages his wines come from: Pommard and Meursault.

Bourgogne Côte d'Or, Chardonnay	750	12	Allocated - Please Inquire
Beaune Blanc, <i>Clos Saint Desirée</i>	750	12	Allocated - Please Inquire
Meursault Blanc	750	12	Allocated - Please Inquire
Meursault Blanc, <i>Limozin</i>	750	12	Allocated - Please Inquire
Bourgogne Côte d'Or, Pinot Noir	750	12	Allocated - Please Inquire
Auxey-Duresses Rouge, <i>les Clous</i>	750	12	Allocated - Please Inquire
Savigny lès Beaune Rouge, <i>1er Cru Les Feuilletts</i>	750	12	Allocated - Please Inquire
Beaune Rouge, <i>les Beaux Fougets</i>	750	12	Allocated - Please Inquire
Pommard	750	12	Allocated - Please Inquire
Pommard, Vignots	750	12	Allocated - Please Inquire
Pommard, <i>1er Cru Charmots, Coeur des Dames</i>	750	12	Allocated - Please Inquire

CHARDIGNY

SAINT-AMOUR - BEAUJOLAIS

www.thesourceimports.com/producers/domaine-chardigny/

In 2014, brothers Pierre-Maxime and Victor-Emmanuel took the reigns of the family vineyards in Beaujolais and St. Veran. First on the agenda was the conversion from sustainable farming to organic. The youngest brother of three, Victor (born in 1991) finished school with a degree in Enology and Viticulture and oversees all the vineyards and winemaking. Pierre-Maxime (born in 1986), the eldest, holds a degree in business and focuses on commerce when times in the vineyard and cellar are slow, (which seems to be never). The middle brother, Jean-Baptiste, although not officially involved at this time, has a degree in agronomy and is currently vineyard manager for Domaine Leflaive's biodynamically-farmed Macon vineyards. It's not difficult to imagine the bright future in store for these talented brothers working together, as their family domaine ascends in St. Veran and St. Amour. Geologically speaking, the transition from southern Maconnais to northern Beaujolais sees a change of soils from Jurassic limestones and clay to the acidic igneous and volcanic rocks of the Massif Central. Viewed from afar, the change seems abrupt, but up close the lines are less clear.

				Frontline		Discounts	
				Case	Bottle	5%	10%
2022	Bourgogne, Chardonnay	750	12	\$268.00	\$22.00	\$20.90	\$19.80
2021	St. Veran Blanc, <i>Vieille Vignes</i>	750	12	\$288.00	\$24.00	\$22.80	\$21.60
2021	Beaujolais Rouge, <i>Leynes</i>	750	12	\$228.00	\$19.00	\$18.05	\$17.10 *
2022	Beaujolais Rouge, <i>Leynes</i>	750	12	\$240.00	\$20.00	\$19.00	\$18.00
2021	Saint Amour, <i>A La Folie</i>	750	12	\$264.00	\$22.00	\$20.90	\$19.80
2020	Saint Amour, <i>Clos du Chapitre</i>	750	12	\$264.00	\$22.00	\$20.90	\$19.80
2021	Saint Amour, <i>Clos du Chapitre</i>	750	12	\$264.00	\$22.00	\$20.90	\$19.80

LA GRAND'COUR (J.L. DUTRAIVE)

FLEURIE - BEAUJOLAIS

www.thesourceimports.com/producers/dutraive/

It's never too late for a renaissance and nearing the age of 60, Jean-Louis Dutraive has done just that. After prying him for what has happened since 2010, there seems to be no other answer outside of pure inspiration and enlightenment. You get the feeling it was always there but has just emerged over the last years. This extremely humble and hard-working vigneron has unintentionally become an iconoclastic vigneron within Beaujolais. He has found his own unique style of winemaking and has pushed his wines to a place that knows no equal. Fleurie is perhaps one of Beaujolais' most elegant appellations. It, like the other crus of Beaujolais, is scrunched up in the north half of Beaujolais and are dominated by more complex soils: schist and granite. At Jean-Louis' Fleurie vines, the soil is granite; the exception being the Brouilly, which is on limestone. All vineyards are farmed naturally with EU organic certification.

2022	Fleurie, <i>Clos de la Grand Cour</i>	750	12	Allocated - Please Inquire
2022	Fleurie, <i>Chapelle des Bois</i>	750	12	Allocated - Please Inquire
2022	Fleurie, <i>Le Clos, Vieilles Vignes</i>	750	12	Allocated - Please Inquire
2022	Fleurie, <i>Lieu-Dit Champagne, Vieilles Vignes</i>	750	12	Allocated - Please Inquire
2022	Brouilly, <i>Vieilles Vignes</i>	750	12	Allocated - Please Inquire
2022	Fleurie, <i>Clos de la Grand Cour</i>	1500	6	Allocated - Please Inquire
2022	Fleurie, <i>Chapelle des Bois</i>	1500	6	Allocated - Please Inquire
2022	Fleurie, <i>Le Clos, Vieilles Vignes</i>	1500	6	Allocated - Please Inquire
2022	Fleurie, <i>Lieu-Dit Champagne, Vieilles Vignes</i>	1500	6	Allocated - Please Inquire
2022	Brouilly, <i>Vieilles Vignes</i>	1500	6	Allocated - Please Inquire

FAMILLE DUTRAIVE

FLEURIE - BEAUJOLAIS

www.thesourceimports.com/producers/dutraive/

				Frontline		Discounts	
				Case	Bottle	5%	10%
2020	Saint Amour Rouge, <i>Clos du Chapitre</i>	750	12	\$372.00	\$31.00	\$29.45	\$27.90
2021	Saint Amour Rouge, <i>Clos du Chapitre</i>	750	12	\$372.00	\$31.00	\$29.45	\$27.90
2021	Chiroubles	750	12	Allocated - Please Inquire			
2022	Chiroubles	750	12	Allocated - Please Inquire			
2020	Chenas, <i>En Papolets</i>	750	12	Allocated - Please Inquire			
2022	Chenas, <i>En Papolets</i>	750	12	Allocated - Please Inquire			
2022	Chenas, <i>Les Perelles</i>	750	12	Allocated - Please Inquire			
2020	Fleurie, <i>Les Deduits</i>	750	12	Allocated - Please Inquire			
2021	Fleurie, <i>Lieu-Dit Champagne</i>	750	12	Allocated - Please Inquire			

JUSTIN DUTRAIVE

FLEURIE - BEAUJOLAIS

www.thesourceimports.com/producers/justin-dutraive/

After some harvest work abroad and numerous years of wine school, Justin, the second offspring of Jean-Louis Dutraive, broke ground on his own label in 2015. He's spent most of his adult life working for his famous father, and like his father's wines, his are gentle and fun, with seriousness brewing within. Open to experimentation, Justin's range is in constant motion each season. All his parcels are rented and worked by himself with organic methods and usually without added sulfites.

				Frontline		Discounts	
				Case	Bottle	5%	10%
2019	Beaujolais Village Rouge, <i>Les Tours - 5 bottles left</i>	750	12	\$312.00	\$26.00	NET	NET
2020	Fleurie Rouge, <i>La Madone - 3 cases left</i>	750	12	\$432.00	\$36.00	NET	NET
2022	Fleurie Rouge, <i>La Madon</i>	750	12	Allocated - Please Inquire			
2022	Beaujolais, <i>Les Bulands</i>	750	12	Allocated - Please Inquire			
2022	Beaujolais Saint Étienne la Varenne <i>Les Tours</i>	750	12	Allocated - Please Inquire			
2022	Beaujolais Villages, <i>Plan B</i>	750	12	Allocated - Please Inquire			
2020	Fleurie Rouge, <i>La Madone</i>	1500	6	\$480.00	\$80.00	NET	NET
2021	Fleurie Rouge, <i>La Madone - 4 Magnums left</i>	1500	6	\$468.00	\$78.00	NET	NET
2018	Beaujolais Village Rouge, <i>Les Tours</i>	1500	6	\$318.00	\$53.00	NET	NET
2019	Beaujolais Village Rouge, <i>Les Tours - 3 Magnums left</i>	1500	6	\$324.00	\$54.00	NET	NET
2018	Fleurie Rouge, <i>Chapelle des Bois - 5 Magnums left</i>	1500	6	\$420.00	\$70.00	NET	NET
2017	Fleurie Rouge, <i>Pieds d'Aroux</i>	1500	6	\$420.00	\$70.00	NET	NET

* - Special Pricing Available

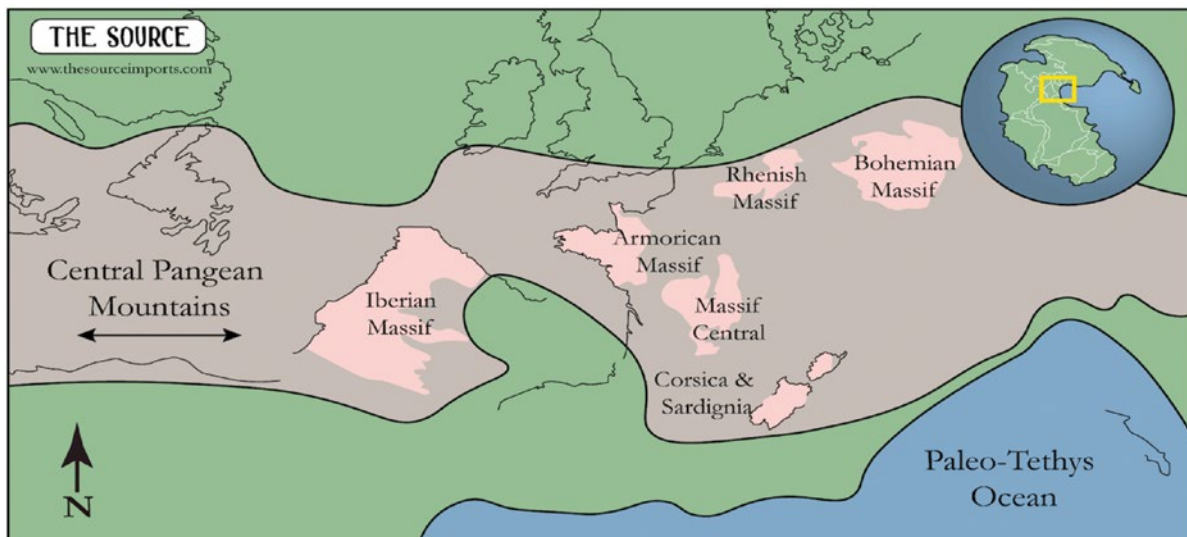
PANGEAN WINE?

Is a wine's vineyard geology strong enough to leave a notable imprint on its wines? Perhaps those in the scientific community are not yet convinced beyond much more than what's imparted by water retention levels, but some of us believe we've experienced observable characteristics, even if they're difficult to describe precisely. A study worth exploring could involve wines grown on the ancient Pangean-era bedrock and topsoil.

Several European wine regions are geologically connected to the last supercontinent, Pangea. One of its ancient mountain chains crossed today's North America, North Africa, and Europe with what scientists believe was comparable in height to today's Himalayas; geologists refer to this mountain chain as the Variscan/Hercynian orogenic belt. The remnants of this ancient tectonic collision that happened 370-290 million years ago are today extremely squat and weathered, and even relatively flat in places like Muscadet and Anjou.

Pangea's igneous and metamorphic rock are predominant and comprise the main bedrock and topsoil of numerous wine regions. Intrusive igneous rocks like granite and gabbro were once liquid magma that slowly cooled below the Earth's surface. Its metamorphic rocks, like slate, schist, and gneiss, were forged under extreme conditions of heat and pressure during the tectonic collision resulting in the alteration of chemical and physical characteristics of their respective *protoliths* (previous rocks). These same ancient igneous and metamorphic formations are spread throughout Western Europe and are found in the viticultural settings of places like Spain's Rías Baixas and Ribeira Sacra, Portugal's Monção e Melgaço and Douro, France's Corsica and Western Loire and Northern Rhône Valleys, Italy's Calabria, and Upper and Lower Austria. The Source represents producers from each of these named areas. Let us know if we can help guide you through our list of growers to see if you can find the relationship between any of these regions.

Researched and written by MSc Ivan Rodriguez and Ted Vance; illustration by Ivan Rodriguez



References: Dercourt, J., Gaetani, M., Vrielynck, B., Barrier, E., Biju-Duval, B., Brunet, M. F., Cadet, J. P., Crasquin, S., and Sandulescu, M., 2000. Peri-Tethys Palaeogeographical Atlas, Paris; Murphy, J.B., Gutiérrez-Alonso, G., Nance, R.D., Fernandez-Suarez, J., Keppie, J.D., Quesada, C., Dostal, J., Braid, J.A. 2009. Rheic Ocean mafic complexes: overview and synthesis; In: Murphy, J.B., Keppie, J.D., Hynes, A. (Eds.), Ancient Orogens and Modern Analogues. Geological Society of London, Special Publication vol. 327, pp. 343-369. doi:10.1144/SP327.15

ANTHONY THEVENET

MORGON - BEAUJOLAIS

www.thesourceimports.com/producers/anthony-thevenet/

Anthony Thevenet is a young vigneron with the fortune of playing with vines in Morgon that were planted as far back as the American Civil War, yes, 150-year-old vines. As he slowly builds up his production from his family's estate he spends his days working in the cellar of Jean-Marc Foillard, a job that followed an apprenticeship with another reputable producer, Georges Descombes. He works similarly in the vineyards like his teachers, without herbicides or pesticides, and works the soil around his vines by hand. He follows the principles of the natural wine movement but the wines remain strikingly clear from many flaws that adorn wines in this movement. The sandy and rocky soils, known as rotton rocks, of Morgon provide a certain structure and richness that is rarely matched by other crus. The famous hill of Cote du Py has a unique soil type that is mostly composed of schist, blue granite and volcanic rock produces the most powerful examples of Beaujolais. Morgon may be the Beaujolais' quintessential village.

				Frontline		Discounts	
				Case	Bottle	5%	10%
2021	Beaujolais Villages Rouge	750	12	\$240.00	\$20.00	\$19.00	\$18.00
2018	Chenas Rouge	750	12	\$264.00	\$22.00	\$20.90	\$19.80
2019	Chenas Rouge	750	12	\$264.00	\$22.00	\$20.90	\$19.80
2021	Morgon Rouge	750	12	\$276.00	\$23.00	\$21.84	\$20.70
2019	Morgon Rouge, Vieilles Vignes	750	12	\$312.00	\$26.00	NET	NET
2021	Morgon Rouge, <i>Les Clos</i>	750	12	\$348.00	\$29.00	NET	NET
2021	Morgon Rouge, <i>Cuvee Centenaire</i>	750	12	\$504.00	\$42.00	NET	NET

STÉPHANE ROUSSET

CROZES HERMITAGE - VALLÉE DU RHÔNE

www.thesourceimports.com/producers/domaine-rousset/

Stephane Rousset's underground status as one of the best producers in the Northern Rhône Valley is about to end. It wasn't too long ago, in what we like to call the age of extraction, that producers making elegant wines were lost in the shuffle. One of the most diverse appellations in France's Northern Rhône Valley, Crozes-Hermitage is also its biggest. Rousset's vineyards lie in its most northern communes of Erôme, Gervans, and Crozes-Hermitage (the village the appellation takes its name from). The soil types here differ greatly from the rest of the appellation. Here you find vines on steep granite terraces of the river's left bank, above the Rhône and tucked back behind the behemoth hill of Hermitage. Across the river, in Tournon, Rousset's two parcels of St. Joseph are on pure granitic soils. In our humble opinion, in this appellation few, if any, vignerons produce wines above this in class and elegance.

				Frontline		Discounts	
				Case	Bottle	5%	10%
2022	Crozes-Hermitage Blanc, Vieilles Vignes	750	12	\$312.00	\$26.00	NET	NET
2019	Crozes-Hermitage Rouge, <i>Mejans</i>	750	12	\$312.00	\$26.00	NET	NET
2020	Crozes-Hermitage Rouge, <i>Mejans</i>	750	12	\$312.00	\$26.00	NET	NET *
2019	Saint-Joseph Rouge, <i>Côte des Rivoires</i>	750	12	\$312.00	\$26.00	NET	NET
2020	Saint-Joseph Rouge, <i>Côte des Rivoires</i>	750	12	\$312.00	\$26.00	NET	NET *

LA ROUBINE

GIGONDAS - VALLÉE DU RHÔNE

www.thesourceimports.com/producers/la-roubine/

Former Parisian fireman, and now the mayor of Gigondas (no joke!), Eric Ughetto took over the family's vineyards in the early 1990s. A small estate with only 15 hectares, it is operated almost entirely by he and his wife, Sophie. They do the vineyard work together, but have clear lines elsewhere: Eric makes the wine and Sophie runs the commercial aspects. Simon, their young son, is already being groomed to start the process of taking the reigns from his pioneering parents. It's no surprise here, just like in any serious estate, that Eric and Sophie stress the importance of their vineyards over all else. The domaine is consciously run without pesticides, chemical fertilizers or herbicides. Since their beginning they have utilized organic methods and are now certified. The wines are a perfect balance of rusticity with precision winemaking.

				Frontline		Discounts	
				Case	Bottle	5%	10%
2021	Sablet	750	12	\$216.00	\$18.00	\$17.10	\$16.20
2020	Seguret	750	12	\$216.00	\$18.00	\$17.10	\$16.20
2020	Vacqueyras	750	12	\$264.00	\$22.00	\$20.90	\$19.80
2021	Vacqueyras	750	12	\$264.00	\$22.00	\$20.90	\$19.80
2021	Gigondas	750	12	\$266.00	\$22.17	\$21.06	\$19.95

DOMAINE PIQUE-BASSE

ROAIX - VALLÉE DU RHÔNE

www.thesourceimports.com/producers/pique-basses/

If Olivier Tropet had vineyards in appellations like Côte Rôtie, Cornas or Châteauneuf-du-Pape he'd be more likely to garner wide acclaim. It's hard to believe what he achieves within the relatively unknown village of Roaix. His range of organically made wines (certified since 2009) are as soulful as they are exquisitely crafted. The reds are savory, deeply flavored, trim and laced with a surprising amount of subtleties for the power they possess. Roaix sits in France's Southern Rhône Valley on the northeast side of the appellation just to the east and north of Rasteau and to the north of Gigondas, which sits just across the Ouvèze Valley. While it shares the same basic grape varieties as its better-known neighbors, there are a number of important distinctions between other appellations in this area and Roaix that make this tiny Côtes du Rhône's village an interesting prospect for those who want less boozy southern French wines that still taste of their place.

				Frontline		Discounts	
				Case	Bottle	5%	10%
2019	Vaucluse, Rouge, <i>Brusquembille</i> - 3,5 cases left	750	12	\$180.00	\$15.00	\$14.25	\$13.50
2020	Vaucluse, Rouge, <i>Brusquembille</i>	750	12	\$180.00	\$15.00	\$14.25	\$13.50
2021	Vaucluse, Rouge, <i>Brusquembille</i>	750	12	\$192.00	\$16.00	\$15.20	\$14.40
2019	Côtes du Rhône Villages, Rouge, <i>Le Chasse-Coeur</i>	750	12	\$192.00	\$16.00	\$15.20	\$14.40

LE VENT DES JOURS

CAHORS - OCCITANIE

After twenty-five years as a sommelier, wine wholesaler and wine bar owner in Paris, the 48-year-old Cahors native, Laurent Marre, found himself in a hospital bed. Unexpected life-threatening conditions and four months confined to a hospital bed changed his priorities, and Laurent and his wife, Nathalie, left the city to return to Laurent's familial homeland. Today they farm 8 biodynamic hectares of vines on their 30-hectare, forest-surrounded, single plot on one of Cahors' highest altitude, limestone sites. The range starts with an intensely mineral and fresh amphora-raised Gros Manseng (C'Juste), followed by a series of impeccably balanced, emotional, and mineral-fresh Malbecs raised in concrete, amphora, and large old French oak barrels and foudres.

				Frontline		Discounts	
				Case	Bottle	5%	10%
2021	Vin de France Blanc <i>C'Juste</i>	750	12	\$216.00	\$18.00	\$17.10	\$16.20
2022	Vin de France Blanc <i>C'Juste</i>	750	12	\$216.00	\$18.00	\$17.10	\$16.20
2021	Cahors <i>Un Jour ou L'Autre</i>	750	12	\$168.00	\$14.00	\$13.30	\$12.60
2020	Cahors <i>Les Calades</i>	750	12	\$216.00	\$18.00	\$17.10	\$16.20
2020	Cahors <i>Les Moutons</i>	750	12	\$300.00	\$25.00	\$23.75	\$22.50

IMANOL GARAY

FRANCE & ESPAÑA

www.thesourceimports.com/producers/imanol-garay/

Spanish/French former engineer, Imanol Garay, un vigneron libre, follows no wine rules (other than some labeling requirements for his French/Spanish wine blends) and believes in terroir not only as the concept of specific site or even region but as a contiguous philosophical thread practiced in different places that may be forged into one wine. A resident of southwest France, his cellar is in Orthez, only a short drive from Spain's Basque country. Before starting his project, he worked with French natural wine gurus Richard Leroy and Vincente Careme, among others. Some vineyards are his own, some he rents and farms, and some fruit comes from friends with the same deep respect for nature. He has another project in Spain's Txakoli region with friends, Alfredo Egia (also in our portfolio) and Gile Iturri, labeled Hegan Egin; some years he makes Rioja, others Navarra, and always a lot of French wine. Cautiously walking the natural wine line, his pursuit is of the clean yet uninhibited, void of unwanted animal smells (the mouse, the horse), but with wonderful character-filled and potently nuanced, high-energy wines filled with joy and authenticity, just like the man himself.

				Frontline		Discounts	
				Case	Bottle	5%	10%
2018	Vin de France, Blanc, <i>Ixilune</i>	750	12	\$528.00	\$44.00	NET	NET
2020	Vin de France, Blanc, <i>Ixilune</i> - 2,5 cases left	750	12	\$528.00	\$44.00	NET	NET
2021	Vin de France, Blanc, <i>Ixilune</i>	750	6	\$288.00	\$48.00	NET	NET
2020	Navarra, Tinto, <i>Clandestinus</i> [Garnacha]	750	12	\$312.00	\$26.00	NET	NET
2021	Navarra, Tinto, <i>Clandestinus</i> [Garnacha]	750	12	\$312.00	\$26.00	NET	NET

LES TERES

VIN DE PAYS DE MÉDITERRANÉE - PROVENCE

www.thesourceimports.com/producers/teres/

This is a second label for Château Rouët, a famous rosé producer in Provence. It comes from an area that has a cool climate and makes wines very fresh and friendly. All three wines, red, white and rosé, were undeniably great for the price. They won't change your life but you will be hard pressed to find something in this category with this price that can surpass this little gem. Settled in the heart of Frejus, Provence, Les Teres' beautiful vineyards are surrounded by forest and protected from the northern winds by the red rock mountains of Esterel. The estate has a few hectares of noble varietals planted on red sandstone and volcanic rock that is representative of the archetypal terroir of Frejus. At only 15 km from the sea, the vineyards benefit from the cool air that flows in from the Mediterranean.

				Frontline		Discounts	
				Case	Bottle	5%	10%
2021	Méditerranée Pay d'Oc Rosé	750	12	\$132.00	\$11.00	\$10.45	\$9.90 *
2016	Méditerranée Pay d'Oc Blanc	750	12	\$132.00	\$11.00	\$10.45	\$9.90 *

VAL DE CAIRE

COTEAUX D'AIX - PROVENCE

www.thesourceimports.com/producers/val-de-caire/

Guillaume Reynier began his wine career in 2003 with the purchase of small vineyard plots directly north of Aix-en-Provence near one of France's many fairytale landscapes, the Parc Naturel Regional du Luberon. Organic farming is employed and he became certified in 2010. His vineyards are ringed by thickets of oaks, bramble, and garrigue, with thyme and rosemary growing on nearly every foot of open forest floor. The forests provide refuge from the deluge of intense Provençal sun, including its blinding reflection off the stark white limestones. As the sun sets, cool air and woody life creep in from the forests, invading the vineyards to provide biodiversity and a stronger diurnal change than most well-known regions in Provence. Limestones are scattered about with ancient scallop shells commonly mortared to them. In certain sections, just meters apart, soils randomly undulate from dark red, iron-rich clays, hard limestones and pure white, soft chalk outcrops.

				Frontline		Discounts	
				Case	Bottle	5%	10%
2021	Coteaux d'Aix en Provence Rosé	750	12	\$180.00	\$15.00	\$14.25	\$13.50 *
2022	Coteaux d'Aix en Provence Rosé	750	12	\$180.00	\$15.00	\$14.25	\$13.50 *
2016	Coteaux d'Aix en Provence Blanc	750	12	\$170.82	\$14.24	\$13.52	\$12.81 *

CANTELAUDETTE

GRAVES DE VAYRES - BORDEAUX

www.thesourceimports.com/producers/chateau-cantelaudette/

In 1984, Jean-Michel Chatelier and his wife, Laurence, fell in love with his family's rundown, abandoned Château and its old, out of shape vineyards. From a young age, Jean-Michel was surrounded by the winemaking business and understood its inner workings, but decided to go to school and earn a master's degree in economic science. At age 30, and freshly married, the pull of the family history (and Laurence!) brought him back to his roots. The decision was made and they rolled up their sleeves and got to it. Jean-Michel's vineyards are located just to the west of Libourne, a village that borders the western edges of Saint-Emilion and Pommerehne, the two greatest Bordeaux producing villages on the right bank of the Garonne River. The vineyard land is grown on variations of gravel, silt, sand and clay, in every soil distribution from sandy-loam, clayey-loam, loam, etc. – so pretty much every type of grain-sized particle and structure to describe a soil!

				Frontline		Discounts	
				Case	Bottle	5%	10%
2016	Graves de Vayres Rouge, <i>Cuvee Prestige</i>	750	12	\$180.00	\$15.00	\$14.25	\$13.50
2020	Graves de Vayres Rouge, <i>Sans Soufre Ajoute</i>	750	12	\$180.00	\$15.00	\$14.25	\$13.50

CLOS FORNELLI

CORSE

www.thesourceimports.com/producers/clos-fornelli/

Josée Vanucci's winemaking philosophy is straightforward and lends itself to a style that speaks of the place with a clear voice of each grape's primary characteristics. The fermentations are all natural and the wines are bottled after a short time in vat with sulfites kept to a minimum. Located on the eastern side of Corsica, on Tyrrhenian Sea, and not too far from mainland Italy, Vanucci's vineyards are up above the plains on the terraces of the Bravone River. The nights on this side of the island are typically cooler than the more famous wine regions on the west side. This is a result of the sharp rise of the mountains from the sea, which effectively cuts the sun off early and lets the cold in to help etch aromatics and texture while raising the frequency on the fruit and accentuating each wine's mineral nuances. Corsica is a wonderful, sunny island (sunnier than mainland France) and this terroir/grape combination gives lift to the high-spirited wines that Josée dreams up and captures in the bottle with a deft touch. The red is made 100% of Sciacarello and the white 100% Vermentinu.

				Frontline		Discounts	
				Case	Bottle	5%	10%
2021	Corse Blanc, <i>La Robe d'Ange</i> (Vermentinu)	750	12	\$216.00	\$18.00	\$17.10	\$16.20
2021	Corse Rouge, <i>La Robe d'Ange</i> (Sciacarello)	750	12	\$216.00	\$18.00	\$17.10	\$16.20

* - Special Pricing Available

ITALIA



FLEIDERHOF
SÜDTIROL
SANTA MAGDALENA

FLIEDERHOF

ST. MAGDALENA - SÜDTIROL/ALTO ADIGE

www.thesourceimports.com/producers/fliederhof/

Martin Ramoser is a true budding young superstar in the wine world, and with the help of his parents, Stefan and Astrid, he's writing a new chapter in the family's wine history. Located in Italy's Südtirol, only a half hour drive from the Austrian border, on the gorgeous and historical hill of Santa Magdalena that overlooks the city center of Bolzano, they cultivate their Schiava and Lagrein vineyards under organic and biodynamic principles. Their mere three hectares of vineyards are all planted on hillsides of porphyry, an igneous volcanic rock with a mix of large and small grain sizes, which makes for sandy, gravelly soils as it decomposes, and results in wines with higher aromas and chewy textures. Martin's style is one of pleasure led by upfront aromatic red fruits and red/orange flowers with sharper lines, deep but gentle mineral textures and a soft touch on extraction.

				Frontline		Discounts	
				Case	Bottle	5%	10%
2020	Sauvignon Blanc, <i>Stella</i>	750	12	\$324.00	\$27.00	NET	NET
2019	St. Magdalener	750	12	\$252.00	\$21.00	\$19.95	\$18.90
2020	St. Magdalener	750	12	\$252.00	\$21.00	\$19.95	\$18.90
2021	St. Magdalener, <i>Marie</i>	750	12	\$264.00	\$22.00	\$20.90	\$19.80
2020	St. Magdalener, <i>Gran Marie</i>	750	12	\$372.00	\$31.00	NET	NET
2019	Lagrein	750	12	\$288.00	\$24.00	\$22.80	\$21.60
2020	Lagrein	750	12	\$288.00	\$24.00	\$22.80	\$21.60

FALKENSTEIN

VALLE VENOSTA - SÜDTIROL/ALTO ADIGE

www.thesourceimports.com/producers/falkenstein/

Falkenstein is an Italian cantina with Austrian heritage, both in familial history and the greater influences on their wine style. Located in Italy's Südtirol/Alto Adige, they produce many different wines (Weissburgunder, Sauvignon, Pinot Noir - all grapes that have been cultivated here for centuries), and many consider the Pratzner family the most compelling Riesling producer in Italy. The vineyard and winery are in one of the many glacial valleys in the north of Italy's alpine country, with a typical relief of a flat valley floor surrounded by gorgeous, steep mountains, which creates starkly contrasting shades and colors throughout. All the vineyards in these parts must have the correct exposure on northern positions that provide some angle of a south face, otherwise there is no chance of achieving palatable ripeness. The vineyards here are some of the world's most stunning, and it's surprising how many are tucked into the valleys of Trentino (the bordering region to the south) and the Südtirol.

				Frontline		Discounts	
				Case	Bottle	5%	10%
2019	Riesling, Vinschgau, Alte Rebe	750	12	\$288.00	\$24.00	\$22.80	\$21.60
2020	Riesling, Vinschgau, Alte Rebe	750	12	\$288.00	\$24.00	\$22.80	\$21.60
2020	Sauvignon, Vinschgau	750	12	\$276.00	\$23.00	\$21.85	\$20.70

TOGNI REBAIOLI

VAL CAMONICA - LOMBARDIA

www.thesourceimports.com/producers/enrico-togni-rebaioli/

Enrico Togni-Rebaioli quit his university studies in Law to get out into nature as he returned to his home in Lombardia's Val Camonica, a long valley carved out by glaciers. His organically farmed and nature-packed vineyards sit on limestone terraces only a half kilometer from volcanic hills across the glacial valley. The grapes of his focus are Barbera, which he makes mostly into sparkling wines, a Nebbiolo still wine, and a few different wines from Erbanno, a member of the "Lambrusco" family that requires almost no treatments in the vineyards because of its strong immunity to mildew and disease. One of the Erbanno wines has almost no extraction and is pressed very early and presents itself somewhat like a Premetta, a very light Schiava, Poulsard, or even the Galician variety, Brancellao. The other Erbanno is a darker and more extracted version with gamier characteristics that go well with food. His Nebbiolo wine, labeled as Vino Rosso 1703, usually comes in around 12% alcohol and is very light in color and layered with extremely delicate classic varietal nuances.

				Frontline		Discounts	
				Case	Bottle	5%	10%
2019	Spumante Rosé, <i>Marti Cuntrare</i>	750	12	\$324.00	\$27.00	NET	NET
2019	Vino Rosato, <i>Martina</i>	750	12	\$276.00	\$23.00	\$21.85	\$20.70
2020	Vino Rosato, <i>Martina</i>	750	12	\$252.00	\$21.00	\$19.95	\$18.90
2020	Vino Rosso, <i>San Valentino</i>	750	12	\$312.00	\$26.00	NET	NET
2019	Nebbiolo, 1703 - 11 bottles left	750	12	\$324.00	\$27.00	NET	NET
2020	Nebbiolo, 1703	750	12	\$360.00	\$30.00	NET	NET

ANDREA PICCHIONI

BUTTAFUOCO DELL'OLTREPÒ PAVESE - LOMBARDIA

www.thesourceimports.com/producers/andrea-picchioni/

The most compelling wines are the most honest. They aren't the great pretenders, all but neutered of their history to create a global-style brand, nor a wine customized to satisfy the natural wine purists who put ideology above all, to the detriment of the product. No matter the current moda, the most authentic and interesting wines sing dialect and teach historical context, and invite our creative minds into their mystery – their bedrock and soil, their genetic heritage, the seasons and vintages, the surrounding woods, the life inside the vineyards and the dirt, and the echo of their nature-conscious ancestors. Their wines guide us into the fantasyland of their madness, and their genius. These are the wines of Andrea Picchioni. In the Oltrepò Pavese's DOC "Buttafuoco dell'Oltrepò Pavese," on the original Buttafuoco hill, Andrea crafts a unique and unapologetically full-flavored range of organic sparkling and still red wines from a mixture of Barbera, Croatina, Ughetta di Canneto (also known as Vespolina), and Uva Rara.

				Frontline		Discounts	
				Case	Bottle	5%	10%
2021	Oltrepo Pavese, Bonarda Delle'Oltrepo Pavese (Sparkling Red)	750	12	\$228.00	\$19.00	\$18.05	\$17.10 *
2020	Oltrepo Pavese, Buttafuoco, <i>Solinghino</i>	750	12	\$228.00	\$19.00	\$18.05	\$17.10 *
2017	Oltrepo Pavese, <i>Rosso d'Asia - 10 bottles left</i>	750	12	\$372.00	\$31.00	NET	NET
2018	Oltrepo Pavese, <i>Rosso d'Asia</i>	750	12	\$360.00	\$30.00	NET	NET
2018	Oltrepo Pavese, <i>Bricco Riva Bianca</i>	750	12	\$420.00	\$35.00	NET	NET

OLIVIERO PASTORIS

CALUSO - PIEMONTE

www.thesourceimports.com/producers/massimo-pastoris/

Maybe I'm only more maniacal than my father, but I understood from him that nature is something that you can't completely control. We must work well in every moment of the season, but the most important job is made from the soil, and we can only make mistakes against the harmony of nature." After years of Latin and Mechanical Engineering studies Eugenio Pastoris returned to his family's organic and regeneratively farmed vineyards. On the eastern end of the Erbaluce di Caluso appellation in Viverone, bordering Alto Piemonte, Pastoris focuses on Nebbiolo and Erbaluce in steel and concrete.

				Frontline		Discounts	
				Case	Bottle	5%	10%
2020	Nebbiolo, Canavese, <i>La Cucca</i>	750	12	\$252.00	\$21.00	\$19.95	\$18.90

DAVIDE CARLONE

BOCA - PIEMONTE

thesourceimports.com/producers/davide-carlone/

Davide Carlone is one of the most serious and important winegrowers in Piedmont. Based in Boca, a small appellation in Alto Piemonte, at the foothills of the Italian Alps, Davide's focus is on Nebbiolo as the base of his production of single-varietal bottlings of the local supporting cast, Croatina (for which he may be the strongest advocate), Vespolina and the cantina's newest comer, Erbaluce. All of the entry-level wines shine and as one goes up the ranks into the Boca appellation and then on to the vineyard selection Boca, Adele, the quality becomes apparent in all the range. In the cellar, he works traditionally with larger old oak botte and extended aging for the top wines in the range and is well-known in the region for his extreme attention to detail in the vineyards; he stands as a model for the surrounding appellations.

				Frontline		Discounts	
				Case	Bottle	5%	10%
2018	Colline Novaresi, Croatina	750	12	\$252.00	\$21.00	\$19.95	\$18.90
2019	Colline Novaresi, Vespolina - <i>1 case left</i>	750	12	\$240.00	\$20.00	\$19.00	\$18.00
2020	Colline Novaresi, Vespolina	750	12	\$264.00	\$22.00	\$20.90	\$19.80
2018	Boca	750	12	\$396.00	\$33.00	NET	NET
2017	Boca, <i>Adele</i>	750	12	\$492.00	\$41.00	NET	NET

IOPPA

GHEMME - PIEMONTE

www.thesourceimports.com/producers/ioppa/

The realization of Michelangelo Ioppa's dream started in 1852 with the purchase some of the most prized vineyard parcels in Northern Piedmont, in what is today's DOCG, Ghemme. The new generation at Ioppa has their sights set on the past glories of traditionally crafted wines from this region, rebounding from more than a decade of experimentation with 225 liter oak barrels. They've returned to soft extractions and long aging in large, old foudre, and the top four reds in the range are aged in 30-35hl foudre for four years! The majority of the most important Alta Piemonte wine regions are set upon igneous rocks in geological origin, while Ghemme is mostly alluvium. Not all alluvium is the same, and Ghemme's unusual bedrock mostly consists of incredibly friable granite rocks; or what appears to be a rock, but can easily be crushed into sand with a gentle squeeze of your fingertips. The Ioppas have also begun the process of converting to organic farming in 2014.

				Frontline		Discounts	
		Case	Bottle	5%	10%		
2022	Colline Novaresi, Nebbiolo Rosé, <i>Rusin</i>	750	12	\$204.00	\$17.00	\$16.15	\$15.30
2021	Colline Novaresi, Nebbiolo	750	12	\$204.00	\$17.00	\$16.15	\$15.30
2015	Ghemme - 1.25 cases left	750	12	\$384.00	\$32.00	NET	NET
2016	Ghemme	750	12	\$384.00	\$32.00	NET	NET
2016	Ghemme, <i>Bricco Balsina</i> - 1.5 cases left	750	12	\$576.00	\$48.00	NET	NET
2012	Ghemme, <i>Sante Fe</i> - 1.5 cases left	750	6	\$288.00	\$48.00	NET	NET
2016	Ghemme, <i>Sante Fe</i> - 1.5 cases left	750	12	\$576.00	\$48.00	NET	NET

FABIO ZAMBOLIN

COSTE DELLA SESIA - PIEMONTE

www.thesourceimports.com/producers/fabio-zambolin/

True northern Piemonte garagiste, Fabio Zambolin inherited his grandparent's tiny vineyard parcels and converted their garage into a winery. He began his project in 2010 with a parcel that he works organically and that sits within the DOC appellation, Lessona. However, the cantina is ten meters outside of the DOC zone (right next to the vineyards) and an archaic law makes it so that he must label his wines Costa della Sesia, a generic term for regional Northern Piedmont wines. As one could imagine, with such a small quantity of grapes to make his wines the level of detail in his organically farmed vineyard and cellar are maintained to an extraordinary level. Famous Italian wine writers of the late 1800s and early 1900s considered Lessona wines the greatest reds in all of Italy, and in the right hands it can represent one of the most pure expressions of Nebbiolo. Fabio's Vallelonga is made purely of Nebbiolo, and Feldo, a blend of 50% Nebbiolo with equal parts of Croatina and Vespolina the difference.

				Frontline		Discounts	
		Case	Bottle	5%	10%		
2020	Coste della Sesia, Rosso, <i>Feldo</i>	750	12	\$264.00	\$22.00	\$20.90	\$19.80
2020	Coste della Sesia, Nebbiolo, <i>Vallelonga</i> - 11 bottles left	750	12	\$300.00	\$25.00	\$23.75	\$22.50

CROTIN

ASTI - PIEMONTE

www.thesourceimports.com/producers/crotin/

After nearly an hour of winding through hills and lifeless villages north of Alba, the road suddenly climbs into forested hills and the humble driveway of the Russo family's cantina and agriturismo, Crotin, which in Piemontese dialect means small cellar. The three Russo brothers, Federico, Marcello and Corrado, are fully committed to organic farming principals, and their wines ooze the life force of their vineyards. Bread and butter grapes like Barbera, Grignolino and Freisa are the game around here and these guys play it with spectacular results. Over the last five years, they've brought their wines to a new level with direction from our very good friend, one of Italy's most promising young enologists, Cristiano Garella. The range of their wines demonstrate Cristiano's hawk eye for detail and authenticity, and makes this estate a sure bet for people who want to spend their time drinking a wine that speaks the dialect of where it comes.

				Frontline		Discounts	
		Case	Bottle	5%	10%		
2018	Chiaretto Rosé, Freisa	750	12	\$168.00	\$14.00	\$13.30	\$12.60
2020	Ruche Di Castagnole Monferrato, <i>Monterosso</i> - 6 bottles left	750	12	\$192.00	\$16.00	\$15.20	\$14.40
2021	Ruche Di Castagnole Monferrato, <i>Monterosso</i>	750	12	\$204.00	\$17.00	\$16.15	\$15.30
2021	Grignolino d'Asti, <i>San Patelu</i>	750	12	\$192.00	\$16.00	\$15.20	\$14.40
2019	Barbera d'Asti, <i>La Martina</i>	750	12	\$192.00	\$16.00	\$15.20	\$14.40
2019	Vino Rosso Contadino, <i>Beverin</i>	1000	12	\$192.00	\$16.00	\$15.20	\$14.40

SETTE

MONFERRATO - PIEMONTE

www.thesourceimports.com/producers/sette/

Asti is Piemonte's new wine laboratory, and experimentation is extensive at Sette where they're looking to expose new dimensions of their local indigenous varieties. The comedic and talented duo of the experienced wine trade pro, Gino Della Porta, and well-known enologist, Gianluca Colombo, founded Sette in 2017 with the purchase of a 5.8-hectare hill in Bricco di Nizza, in Monferrato. Immediately, a full conversion to organic farming began, followed by biodynamic starting in 2020 – the latter, a vineyard culture still considered somewhat radical in these parts. The wines are crafted and full of vibrant energy with only a soft polish, with the focus, the slightly turbid and lightly colored, juicy fruity, minerally Grignolino and their two serious but friendly Barberas. Sette's game-changing progressive approach and delicious wines (with total eye candy labels) should ripple through this historic backcountry and bring greater courage to the younger generations to break out of the constraints of the past and move full throttle into the future.

				Frontline		Discounts	
				Case	Bottle	5%	10%
2021	Vino Bianco, <i>Sette</i> (Dry Moscato)	750	12	\$288.00	\$24.00	\$22.80	\$21.60
2021	Barbera d'Asti	750	12	\$276.00	\$23.00	\$21.85	\$20.70
2018	Nizza DOCG, Barbera	750	12	\$372.00	\$31.00	NET	NET
2019	Nizza DOCG, Barbera	750	12	\$372.00	\$31.00	NET	NET

LA CASACCIA

MONFERRATO - PIEMONTE

www.thesourceimports.com/producers/la-casaccia/

Even in Italy it may be impossible to find a vignaiolo who emits as much bubbling enthusiasm and pure joy for their work than La Casaccia's Giovanni Rava. La vita è bella for Giovanni and Elena Rava, and their children, Margherita and Marcello. Working together in a life driven by respect for their land and heritage, they also offer accommodations in their restored bed and breakfast for travelers looking for a quieter Italian experience. Their vines are organically farmed and scattered throughout the countryside on many different slopes with strong biodiversity of different forms of agriculture and untamed forests teeming with wild fruit trees (with the best of all, the cherries!). Their traditionally crafted range of wines grown on soft, purely calcareous sandstones and chalk are lifted, complex and filled with the humble yet exuberant character of the Rava family.

				Frontline		Discounts	
				Case	Bottle	5%	10%
2021	Chardonnay, <i>Charnò</i>	750	12	\$174.00	\$14.50	\$13.78	\$13.05
2021	Grignolino del Monferrato, <i>Poggeto</i>	750	12	\$174.00	\$14.50	\$13.78	\$13.05
2019	Freisa del Monferrato, <i>Monfiorenza</i>	750	12	\$174.00	\$14.50	\$13.78	\$13.05
2020	Freisa del Monferrato, <i>Monfiorenza</i>	750	12	\$174.00	\$14.50	\$13.78	\$13.05
2019	Barbera del Monferrato, <i>Giuanìn - 7 bottles left</i>	750	12	\$174.00	\$14.50	\$13.78	\$13.05
2020	Barbera del Monferrato, <i>Giuanìn</i>	750	12	\$174.00	\$14.50	\$13.78	\$13.05

LUIGI SPERTINO

MONFERRATO - PIEMONTE

www.thesourceimports.com/producers/luigi-spertino/

Mauro Spertino is one of the most artistic and technical craftspeople in our entire portfolio. The diversity and skill demonstrated throughout his range forecast the inevitability that he will find his place among other wine alchemists in Italy whose unmistakable imprints are evident at first smell – Quintarelli, Bea and Soldera are names that come to mind. His reds range from bright and sensual, able to flutter and seduce (Grignolino), to more elixir-like and dark (Barbera wines), which mesmerize with a deep well of discovery in each smell and taste. Mauro toys with Cortese, a white grape from which he slowly extracts an orange hue, crystalline clarity and mind-bending complexity. His vermouth, Belle Epoque, carries a ballerina-like balance of power and grace. All that he touches from his Asti vineyards he makes into something dazzling and one of a kind.

				Frontline		Discounts	
				Case	Bottle	5%	10%
2018	Blanc de Noirs, Metodo Classico	750	12	\$456.00	\$38.00	NET	NET
2019	Blanc de Noirs, Metodo Classico	750	12	\$432.00	\$36.00	NET	NET
2022	Grignolino d'Asti	750	12	\$288.00	\$24.00	NET	NET
2021	Barbera d'Asti, Superiore, <i>La Bigia</i> ,	750	12	\$312.00	\$26.00	NET	NET
NV	Vermouth di Torino, <i>Belle Epoque</i>	750	12	\$540.00	\$45.00	NET	NET



Planted in 2018, Mauro Marengo's Terlo vines are in the upper section of this very steep MGA of the Barolo commune are completely exposed to the east overlooking the town of Barolo. Much of Terlo is blended into the Langhe Nebbiolo. The Ravera MGA has great diversity due to its 130 hectares of vines and its many exposures between 300-480m. While it's a very large MGA with many expositions and a massive altitude range, Marengo's Ravera is on the far north end and is adjacent to Terlo. Planted between 1997 (the year Daniele Marengo was born) and 2003, the upper section of Ravera is selected for the Langhe Nebbiolo, while the lower section for the Ravera Barolo. The reason for this distinction between the parcels used for the Langhe Nebbiolo and the Barolo isn't specifically the altitude, it's likely the slight geological shift between the upper and lower portions of their Ravera plots.

The Langhe's terroir revolutionary, Alessandro Masnaghetta, states that Terlo and Ravera share the same basic geological formation of "laminated Sant'Agata Fossili marls, except in the higher areas where there are also sandy Sant'Agata Fossili Marls and Diano Sandstones." The most important takeaway from Masnaghetta is that the sandier zones are higher while the greater density of marls are a little lower on the slope. The vines on the more marly soils make more formidable wines than those on sand, though those sandier sites bring so much beautiful aroma! Other digestible terms in Masnaghetta's sentence: laminated, marls, and sandstone. "Laminated" implies a sequence of sedimentary rock layers (see the picture to the right), and in this case they are small-scale sequences that Masnaghetta says "consist of strata of variable thickness which range from a few fractions of an inch (millimeters) to something less than a foot." Marls are a soft rock formation and are classified as such if they contain 35-65% (calcium and/or magnesium) carbonate and 35-65% clay. Sandstones seem self-explanatory, but what holds the sand grains together (which are almost always siliceous sand grains) may play a role in a wine's expression. For example, some of the binding/cementing material between grains could be of siliceous or calcium carbonate origin. Read more on our website.



Sandy Sant'Agata Fossili Marls and Diano Sandstones at the top of Terlo

MAURO MARENCO

BAROLO - PIEMONTE

www.thesourceimports.com/producers/mauro-marengo/

Once the Marengo family's technical direction was given to Daniele at age twenty-two, his personal taste and style of wines led him to pursue freshness over power and ripeness, and to highlight their Novello-based high-altitude vineyards. They turned their attention to soil health and the incorporation organic farming. The cellar work was gentler, and new techniques were employed. They harvest earlier, consider whole cluster and submerged cap fermentations when traditional methods need a boost. They gently extract and press, manipulate less and age in concrete and medium-sized botte. They also bottle early to keep the wines fresh, clean, and not overworked or exhausted before bottling. Led by their three MGA sites, Ravera, Terlo, and La Volta, Nebbiolo is the focus, but Daniele's Barbera, Dolcetto and Nas-cëtta also inspire.

				Frontline		Discounts	
				Case	Bottle	5%	10%
2022	Dolcetto d'Alba	750	12	\$192.00	\$16.00	\$15.20	\$14.40
2019	Barbera d'Alba, Superiore	750	12	\$240.00	\$20.00	\$19.00	\$18.00
2021	Langhe Nebbiolo	750	12	\$228.00	\$19.00	\$18.05	\$17.10
2018	Barolo, <i>Angela</i>	750	12	\$408.00	\$34.00	NET	NET

BRANDINI

BAROLO - PIEMONTE

www.thesourceimports.com/producers/agricola-brandini/

The organically farmed Agricola Brandini is run by two young and idealistic sisters, Serena (vintage 1992) and Giovanna (1994), in full directional control with the support of their father, Piero Bagnasco. Certified organic since 2011, they have also introduced biodynamics and permaculture to their 25 estate-owned hectares in the high-altitude zones of La Morra, Roero and Alta Langa. Their estate Barolo vineyards (four La Morra parcels and R56) are located on the backside (northwest) of La Morra and are characterized by calcareous sandstones that render Barolos of great elegance. They also rent 10 hectares of vines for the crus, Cerretta and Annunziata, and organically farmed and certified, high altitude sites south of Monforte d'Alba for their Alba wines of Dolcetto, Barbera, and Nebbiolo. Vinification for their raw yet refined, pale colored, understated and elegant Nebbiolo are deeper in terroir imprint and structure than those prior to the sisters' takeover in 2015. Brandini's cellar work is progressive (including shorter maceration times, stem inclusion and infusion extraction methods), and it accentuates finesse above all for these botti-aged Barolos that drink well young and also age nicely, building on their youthful assets.

				Frontline		Discounts	
				Case	Bottle	5%	10%
2019	Alta Langa, <i>Brut</i>	750	12	\$324.00	\$27.00	NET	NET
2021	Langhe Arneis, <i>Le Margherite</i>	750	12	\$216.00	\$18.00	\$17.10	\$16.20 *
2022	Dolcetto d'Alba, <i>Filari Lunghi</i>	750	12	\$216.00	\$18.00	\$17.10	\$16.20 *
2021	Barbera d'Alba, <i>Classica</i>	750	12	\$216.00	\$18.00	\$17.10	\$16.20
2021	Langhe Nebbiolo, <i>Filari Corti</i>	750	12	\$252.00	\$21.00	\$19.95	\$18.90 *
2017	Barolo, <i>La Morra</i>	750	12	\$480.00	\$40.00	NET	NET
2018	Barolo, <i>La Morra</i>	750	12	\$480.00	\$40.00	\$38.00	\$36.00 *
2018	Barolo, <i>R56</i>	750	12	\$780.00	\$65.00	NET	NET
2017	Barolo, <i>Annunziata</i>	750	12	\$780.00	\$65.00	NET	NET
2016	Barolo, <i>Cerretta</i>	750	6	\$420.00	\$70.00	NET	NET

DAVID FLETCHER

BARBARESCO - PIEMONTE

www.thesourceimports.com/producers/david-fletcher/

The name Fletcher doesn't exactly evoke thoughts of classically styled Barbaresco. However, if tasted without the label in view, there's not a chance anyone would guess his Nebbiolo wines were the handiwork of a young Aussie. In fact, it wouldn't be a stretch if thought to have been crafted by a seventy-something winegrower in the twilight of their career, with an interpretation learned from decades of noise and experimentation, evolving into beauty, balance and a timeless, gentle melody. Dave's philosophy and practice with Nebbiolo is to simply have as little impact as possible and to demonstrate a full display of the talent in each vineyard by focusing on clarity and grace while building on the unmistakable nuances unique to Piemonte. His Barbera, however, is a contemporary of modern, natural Beaujolais wine made with more than a third of its whole clusters and with very little extraction semi-carbonic fermentation – a delicious and thoughtful use of this high acid grape that could use a different face or at least a makeover, on occasion.

				Frontline		Discounts	
				Case	Bottle	5%	10%
2020	Langhe Nebbiolo - 6 bottles left	750	12	\$312.00	\$26.00	NET	NET
2021	Langhe Nebbiolo	750	12	\$300.00	\$25.00	\$23.75	\$22.50
2019	Barbaresco, <i>Recta Pete</i> - 4 bottles left	750	12	\$420.00	\$35.00	NET	NET
2020	Barbaresco, <i>Faset</i>	750	12	\$612.00	\$51.00	NET	NET
2020	Barbaresco, <i>Starderì</i>	750	12	\$756.00	\$63.00	NET	NET
2019	Barbaresco, <i>Roncaglie</i>	750	12	\$780.00	\$65.00	NET	NET
2020	Barbaresco, <i>Roncaglie</i>	750	12	\$732.00	\$61.00	NET	NET

LA BATTAGLIOLA

LAMBRUSCO - EMILIA-ROMAGNA

www.labattagliola.it

After inheriting La Battagliola, in Piumazzo, Modena, Alberto Salvadori switched careers in 1999 to cultivate Grasparossa vines. A strong desire to preserve indigenous varieties, he began planting Pignoletto in 2015. Sustainable farming on gravel soils with natural yeasts, the wines are full-flavored with a dark-colored Lambrusco fermented and aged in stainless steel.

				Frontline		Discounts	
				Case	Bottle	5%	10%
2021	Pignoletto Modena, Spumante	750	12	\$228.00	\$19.00	\$18.05	\$17.10
2021	Lambrusco Grasparossa di Castelvetro	750	12	\$192.00	\$16.00	\$15.20	\$14.40 *

SORGENTE

PROSECCO - FRIULI-VENEZIA GIULIA

www.thesourceimports.com/producers/sorgente/

Sorgente Prosecco comes from a small vineyard plot of only six hectares of Glera vines; there are no other grapes added to the Prosecco and all of them are estate owned. Located in Friuli-Venezia Giulia, the vineyards sit only a few hundred meters from the natural spring (called sorgente in Italian) at the nascita of the Livenza River. The proximity to the Alps (which begins no more than ten miles to the north) and the Adriatic (twenty miles away) brings an ideal temperature characterized by large diurnal swings from day to nighttime which is crucial for the development of complex phenolics, fresh acidity and elevated aromatics – all necessary for a proper Prosecco to remain true to form (bright, fresh, minerally) and function (pleasure over intellect). The vineyard soils are endowed with limestone and clay, both a mixture of the former salty marshland that existed here millions of years ago along with alluvial soils largely composed of limestone. From a pedigree standpoint, there is good reason that one would discover the mineral nuances of this “simple” Prosecco due to its soil composition and climatic balance. There are no herbicides and pesticides used in the vineyards, only vineyard treatments of copper and sulfur. After a rigorous selection process, they sell off more than 60% of their Prosecco base wine to negociants through their leaving a mere 40% off their six estate hectares for these two wines.

				Frontline		Discounts	
				Case	Bottle	5%	10%
NV	Prosecco, Brut	750	12	\$156.00	\$13.00	\$12.35	\$11.70
NV	Prosecco, Extra Dry	750	12	\$156.00	\$13.00	\$12.35	\$11.70
NV	Prosecco Rosé, Extra Brut, <i>La Fonte</i>	750	12	\$156.00	\$13.00	\$12.35	\$11.70
NV	Spumante Rosé, Pinot Noir, <i>Issimo</i>	750	12	\$168.00	\$14.00	\$13.30	\$12.60 *
2021	Pinot Grigio, <i>Tuo</i>	750	12	\$136.00	\$11.33	\$10.77	\$10.20

QUERCIA AL POGGIO

CHIANTI CLASSICO - TOSCANA

www.thesourceimports.com/producers/quercia-al-poggio/

The old saying about the resemblance of a dog to its owner could also be said about a wine and its maker. Timid and soft at first, Vittorio is a humble man who reveals the fire of his passion only through his bright eyes and his uncontrollable smile. They spare no expense as they execute precision organic farming in tune with nature's rhythms, use minimal new oak and put very little hand in the wines. Quercia al Poggio is located in Barberino Val d'Elsa, smack dab between Florence and Siena. The Rossi's ancient property is positioned very close to two historical estates in Chianti Classico, Isola e Olena and the Castello della Paneretta. Their soils have a lot of limestone-rich clay with less abundant sections of galestro (a clayey schist soil and stone), a unique geological formation found in many regions of Chianti Classico.

				Frontline		Discounts	
				Case	Bottle	5%	10%
2020	Chianti Classico	750	12				Sold Out

RIECINE

CHIANTI CLASSICO - TOSCANA

www.thesourceimports.com/producers/riecine/

Since the passing of Riecine's founders, John Dunkley and his wife, Palmina Abbagnano, the property passed through a few different owners. In 2015, a young and talented Italian enologist named Alessandro Campatelli was put in charge. His mission was to bring back the spirit of these historic Chianti Classico wines that began with the 1973 vintage made by Dunkley and his then enologist, Carlo Ferrini. Ferrini has since become one of the biggest names in Italian wine and Alessandro's first order of business was to ask him back to help rediscover the magic that he had found there over forty years ago. After Dunkley passed away in 1996, Ferrini decided to move on the following year. He was surprised by the call from Alessandro and hadn't been back to Riecine since the day he resigned. "It had been almost twenty years and when Ferrini arrived, he had tears in his eyes. John and Palmina were like Ferrini's second parents. It was a great moment to have him back," Alessandro explained.

				Frontline		Discounts	
				Case	Bottle	5%	10%
2021	Rosé, Sangiovese <i>Palmina</i>	750	12	\$240.00	\$20.00	\$19.00	\$18.00 *
2022	Rosé, Sangiovese <i>Palmina</i>	750	12	\$180.00	\$15.00	\$14.25	\$13.50
2022	Bianco, <i>Bianco di Riecine</i>	750	12	\$480.00	\$40.00	NET	NET
2021	Chianti Classico	750	12	\$312.00	\$26.00	NET	NET *
2019	Rosso Toscana, <i>Riecine di Riecine</i>	750	12	\$684.00	\$57.00	NET	NET
2020	Rosso Toscana, <i>Riecine di Riecine - 1 case left</i>	750	12	\$696.00	\$58.00	NET	NET
2017	Rosso Toscana, <i>La Gioia - 11 bottles left</i>	750	12	\$660.00	\$55.00	NET	NET
2018	Rosso Toscana, <i>La Gioia</i>	750	12	\$612.00	\$51.00	NET	NET

GIACOMO BARALDO

TOSCANA

www.thesourceimports.com/producers/giacomo-baraldo/

There is no better environment for an artistic, free-thinking, well-trained and technically astute enologist and vignaiolo than the countryside where Giacomo Baraldo started his Tuscan wine adventure in his hometown of San Casciano dei Bagni, the small, gorgeous and historic Tuscan village famous for its thermal baths along with some recently discovered ancient artifacts that are rewriting history. Influenced by his past, supported by his family, yet beholden to nothing and no one, he thinks freely and acts on intuition guided by his near decade of widely varied experiences in wineries from Bordeaux and Burgundy, to Patagonia and New Zealand (where he also has a small ongoing wine project). In his early thirties, he settled back home in San Casciano dei Bagni to craft wine on unknown, high-altitude terroirs. His wines are thoughtful, exploratory, generous-but-measured and diverse, from Chardonnay planted on a rocky limestone slope below cliffs using massale selections from the Côte d'Or gathered from friendly vigneroni he met in his years working and training in Burgundy. His Grechetto orange wine was reborn in the field from vines below the main square of San Casciano dei Bagni, and his Sangiovese single-site wines must be highlighted, as they are his true muse, the inspiration that guides his work to unlock the potential of Monte Cetona, a solitary limestone mountain with a complex geology halfway between Rome and Florence in the Provincia di Siena. This rugged and strong but intellectually refined statue of a man challenges the belief that Europe's great terroirs are all already documented. Monte Cetona has no known vinous history, though when you taste Giacomo's wines, you can't help but wonder, as he does, how this hill was missed.

				Frontline		Discounts	
				Case	Bottle	5%	10%
2021	Toscana Bianco, <i>Risveglio</i>	750	12	\$288.00	\$24.00	\$22.80	\$21.60
2022	Toscana Bianco, <i>Risveglio</i>	750	12	\$288.00	\$24.00	\$22.80	\$21.60
2020	Toscana Bianco, <i>il Pergola di Silvestro</i>	750	12	\$384.00	\$32.00	NET	NET
2021	Toscana Bianco, <i>il Pergola di Silvestro</i>	750	12	\$384.00	\$32.00	NET	NET
2020	Vino Bianco, <i>l'Affacciatoio</i>	750	12	\$360.00	\$30.00	NET	NET
2021	Vino Bianco, <i>l'Affacciatoio</i>	750	12	\$372.00	\$31.00	NET	NET
2020	Toscana Rosso, <i>il Bossolotto</i>	750	12	\$324.00	\$27.00	NET	NET
2019	Toscana Sangiovese, <i>Cru, il Bossolo</i>	750	12	\$408.00	\$34.00	NET	NET
2020	Toscana Sangiovese, <i>Cru, il Bossolo</i>	750	12	\$432.00	\$36.00	NET	NET
2019	Toscana Sangiovese, <i>Cru, il Pozzone</i>	750	12	\$432.00	\$36.00	NET	NET
2020	Toscana Sangiovese, <i>Cru, il Pozzone</i>	750	12	\$468.00	\$39.00	NET	NET
2019	Toscana Sangiovese, <i>Cru, Caccialupi</i>	750	12	\$432.00	\$36.00	NET	NET
2020	Toscana Sangiovese, <i>Cru, Caccialupi</i>	750	12	\$468.00	\$39.00	NET	NET
2020	Toscana Rosso, <i>Tulio "0.0k"</i>	750	12	\$528.00	\$44.00	NET	NET

CANTINARTE

ABRUZZO

www.thesourceimports.com/producers/cantinarte/

CantinArte is the unification of two Abruzzesi families from very different areas inside one of Italy's many extremely geologically and topographically diverse Italian departments. The cantina's range of Abruzzo whites, rosé (Cerasuolo), and reds are extremely diverse and come from opposing terroirs: one by the sea and the other high up in the mountains. Francesca Di Nosio and Diego Gasbarri began their wine adventure together in 2007 with the Montepulciano vineyard (planted in 1970) inside the Province of Chieti at 300m and about ten kilometers from the Adriatic Sea on soft sloping southeast exposed vines grow on deep clay and produce balanced, bright and fresh, red-fruited young wines. By contrast, their tension-filled Pecorino and Pinot Grigio grow in the mountains on limestone bedrock and clay and limestone topsoil at 740m in Diego's familial neighborhood about an hour's drive from the Montepulciano vineyard. All wines are hand harvested, spontaneous fermented and aged in steel, old French oak and amphora.

				Frontline		Discounts	
				Case	Bottle	5%	10%
2021	Pinot Grigio, <i>Terre Aquilane, Colori</i>	750	12	\$288.00	\$24.00	\$22.80	\$21.60
2020	Cerasuolo d'Abruzzo, <i>Gaia</i>	750	12	\$276.00	\$23.00	\$21.85	\$20.70
2020	Montepulciano d'Abruzzo, <i>Ode</i>	750	12	\$264.00	\$22.00	\$20.90	\$19.80
2010	Montepulciano d'Abruzzo, <i>Rossopuro</i>	750	6	\$222.00	\$37.00	NET	NET



The mountains of Calabria are remnants of Pangea, Earth's last supercontinent (see the Pangea Wines? portfolio insert above!), a time when all of today's continents were scrunched together. Though this ancient formation is dominant in Calabria, Cirò's soils have very little to do with it. Cirò's vineyards are in more recent deposition from between 23 million years ago to today, similar in age to France's Southern Rhône Valley and Italy's Langhe, though composed of different materials. Despite Cirò's similarities to Nebbiolo the depositions that make up the better soils are different, and so is the overall terroir of the Cirò DOC. Most of the vineyards of the region extend from only meters above the sea and few reach beyond three hundred to four. The better vineyards are said to be in the areas with higher quantities of calcareous materials (like Langhe) than others with the majority either south, southeast and west of the hilltop village, Cirò, and on a flat area above the beachfront of Cirò Marina. On the northside of Cirò, there are less calcareous materials between the two townships and the areas toward their north side - note on the image where the soil is whiter toward the south (on the left side of the image) and the darker soil in the north (on the right side) - it's as clear as brown and white!



SERGIO ARCURI

CIRÒ - CALABRIA

www.thesourceimports.com/producers/sergio-arcuri/

As a fourth-generation winegrower, Sergio Arcuri grew up making traditional Cirò (a DOC created in 1969 – one of the first in Italy) with his father, “Since he was three,” and from early on knew he wanted to make wine. He bottled his first vintage in 2009, commercialized his first rosato in 2010, and rosso in 2011. Most of the region's vineyards extend from only meters of altitude, and few reach beyond 300-400m. There are areas with higher quantities of calcareous materials than others (like Langhe), with the majority either S/SE/W of the hilltop village, Cirò, and on a flat area around Cirò Marina's beachfront. All six hectares of Arcuri's vineyards are inside the Classico zone on the plain beside the sea, with the highest reaching 70m in altitude. The average vine age is 30 years old, with the oldest parcels being 70. Vinification involves varying lengths of maceration time (three to four hours for “Il Marinetto,” three to four days for “Aris,” nine to 15 days for “Piu Vite”), natural fermentations in tank, with fully submerged caps and no must movements. They are lightly pressed (stronger press juice wines sold to local friends) and aged in concrete (six months for Rosato, 20 months Aris, four years for Piu Vite), and are finished with low sulfite levels after malolactic and again before bottling. The white and Rosato are filtered before bottling, and none are fined.

				Frontline		Discounts	
				Case	Bottle	5%	10%
2021	Rosato, <i>Il Marinetto</i>	750	12	\$276.00	\$23.00	\$21.85	\$20.70 *
2019	Cirò, <i>Aris</i>	750	12	\$312.00	\$26.00	NET	NET
2016	Cirò, <i>Riserva</i>	750	12	\$408.00	\$34.00	NET	NET

MADONNA DELLE GRAZIE

VULTURE - BASILICATA

www.thesourceimports.com/producers/cantina-madonna-delle-grazie/

The Latoracca family team of three (two sons, Paolo and Michele, both with enology degrees and father, Giuseppe, who spends all day in the vineyards) has come out swinging since bottling their first wines in 2003. The combination of two idealistic millennial enologists (Michele has a second degree in Agronomy as well, which he teaches in school) coupled with their father's deep vineyard wisdom creates the launching pad for truly astonishing juice. These wines convey clarity, craftsmanship, authenticity, and energy unheard of at such reasonable cost. It's as if they discovered some secret the rest of the world hasn't learned yet. If you like reds with a tight grain, lithe body, and high-toned aromas, these are for you.

				Frontline		Discounts	
				Case	Bottle	5%	10%
2022	Aglianico del Vulture Bianco, <i>Leuconoe</i>	750	12	\$168.00	\$14.00	\$13.30	\$12.60
2016	Aglianico del Vulture Rosso, <i>Messer Oto - 1,75 cases left</i>	750	12	\$168.00	\$14.00	\$13.30	\$12.60
2017	Aglianico del Vulture Rosso, <i>Messer Oto</i>	750	12	\$168.00	\$14.00	\$13.30	\$12.60
2018	Aglianico del Vulture Rosso, <i>Liscone</i>	750	12	\$192.00	\$16.00	\$15.20	\$14.40
2016	Aglianico del Vulture Rosso, <i>Bauccio</i>	750	12	\$276.00	\$23.00	\$21.85	\$20.70

ETNA BARRUS CONTADINO

ETNA - SICILIA

www.thesourceimports.com/producers/etna-barrus/

The dream project of four men, Etna Barrus has 2.7 vineyard hectares planted in 2005 below one of Mount Etna's extinct cones, Monte Gorna. At 600m altitude with a SE exposure and an open view of Ionian Sea, their organic massale selections (in conversion since 2021) of Nerello Mascalese (90%) and Nerello Cappuccio (10%) grow on sandy volcanic soils rich in organic substances. Their vinification includes natural fermentation and maceration of destemmed grapes for around one week are pressed and they finish fermentation in steel. Purple Barrus is aged exclusively in steel while Orange Barrus, their “selezione” is raised for 12-18 months in old French oak barrels of 225-500l.

				Frontline		Discounts	
				Case	Bottle	5%	10%
2020	Etna Rosso, <i>Purple Label</i>	750	12	\$288.00	\$24.00	\$22.80	\$21.60 *
2018	Etna Rosso, <i>Orange Label</i>	750	12	\$312.00	\$26.00	NET	NET *
2019	Etna Rosso, <i>Orange Label</i>	750	12	\$312.00	\$26.00	NET	NET *

PORTUGAL



QUINTA DA CAROLINA
DOURO
ESTATE VINEYARDS IN THE FOREGROUND

CONSTANTINO RAMOS

MONÇÃO E MELGAÇO & VALE DO LIMA, VINHO VERDE

www.thesourceimports.com/product/2019-zafirah-vinho-verde-tinto/

Constantino Ramos is the most interesting young wine producer in Monção e Melgaço, Portugal's most prestigious and famous subzone of the Vinho Verde. During his tenure as the head winemaker for the famous Monção e Melgaço producer, Anselmo Mendes, Constantino's personal wine project started with a challenge from his cousin who had a few small vineyard plots in Monção that were higher in altitude than the typical vineyards in the area. Affluent, his Alvarinho is often one of the first vineyards picked in the entire appellation, leading to wines of high amplitude and vibrant acidity, and his red, Zafirah (a Muslim name that means graciousness), is made of a mix of the high-spirited red grapes, Brancelho, Cainho Longo, Espadeiro, Vinhão and Borraçal (Caño Tinto).

				Frontline		Discounts	
				Case	Bottle	5%	10%
2021	Vinho Verde Tinto, <i>JUCA</i>	750	12	\$192.00	\$16.00	\$15.20	\$14.40
2021	Vinho Verde Tinto, <i>Zafirah</i>	750	12	\$204.00	\$17.00	\$16.15	\$15.30

QUINTA DO AMEAL

VALE DO LIMA - VINHO VERDE

www.thesourceimports.com/producers/quinta-do-ameal/

The strikingly beautiful and serene Quinta do Ameal is in the heart of the Lima Valley, within Portugal's vast Vinho Verde wine region. The Lima Valley is the most northwesterly zone and borders the Atlantic Ocean to the west and is separated from Spain by the Minho River to the north. The altitude of the vineyards inside this east/west valley get higher to further west one goes, and the terrain becomes more uneven, giving rise to multiple micro-climates, with the Lima Valley perhaps the coldest and with the most precipitation. The Loureiro grape (the sole grape used in all of Ameal's wines) thrives in the vineyard's igneous granite bedrock and topsoil – the same bedrock that covers the majority of the valley, with the remainder variations of metamorphic rock. Ameal's wines here are made in neutral vessels (stainless steel for the entry-level wine, old barrels for the higher-end wines) and remain fresh, low in alcohol and extremely versatile with almost any kind of food from land and sea.

				Frontline		Discounts	
				Case	Bottle	5%	10%
2021	Vinho Verde Branco (Loureiro)	750	12	\$180.00	\$15.00	\$14.25	\$13.50
2013	Vinho Minho, <i>Eschola</i>	750	12	\$336.00	\$28.00	NET	NET *

MENINA D'UVA

PLANALTO MIRANDÊS - TRÁS-OS-MONTES

www.thesourceimports.com/producers/menina-duva/

In 2017, Aline Domingues left her home city of Paris for Uva, a remote village on the Planalto Mirandês, a quiet and mostly desolate countryside in northeast Portugal's Trás-os-Montes wine region. While the Trás-os-Montes is known for heavy wines, Menina d'Uva couldn't be much further from that style. Here, she's begun to modernize the wines in the best possible way: indigenous local grape varieties, organic farming, naked wines made through gentle extraction and a low-tech, heavily thought out, soft-touch approach. The result is wines with soft-colored hues, low-to-medium alcohol with natural freshness and tension. Her wines have heightened aromatic nuances of spring fruits, moorland brush and flowers, with unusually profound minerally and metallic textures that vibrate on the palate.

				Frontline		Discounts	
				Case	Bottle	5%	10%
2020	Vinho Branco, <i>Liquen - 10 bottles left</i>	750	12	\$240.00	\$20.00	\$19.00	\$18.00
2021	Vinho Branco, <i>Liquen</i>	750	12	\$288.00	\$24.00	\$22.80	\$21.60
2021	Vinho Tinto, <i>Ciste</i>	750	12	\$240.00	\$20.00	\$19.00	\$18.00
2021	Vinho Tinto, <i>Palomba - 8 bottles left</i>	750	12	\$288.00	\$24.00	\$22.80	\$21.60

MENINA D'UVA
TRÁS-OS-MONTES

BASTARDO
ROXO

TINTA GORDA

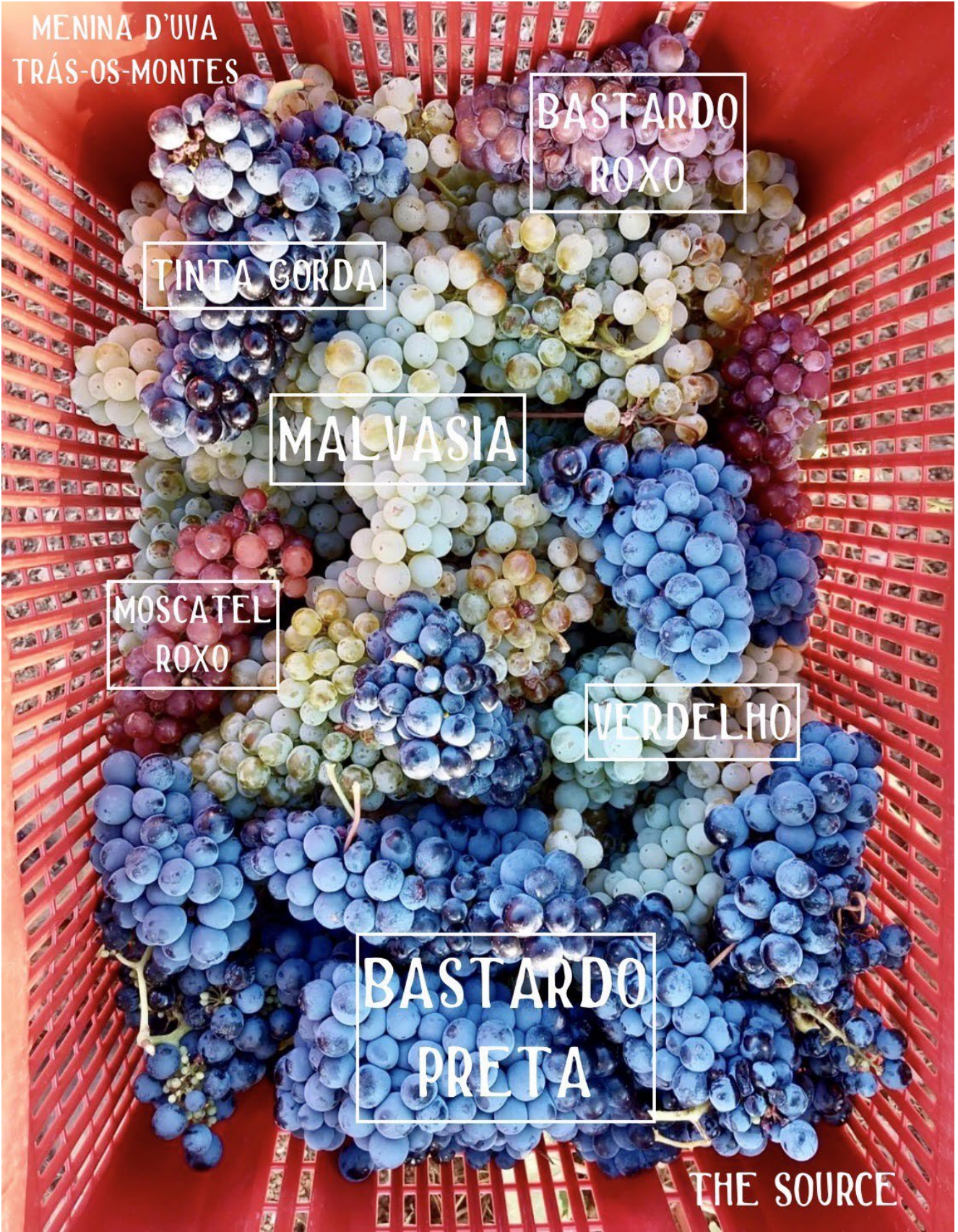
MALVASIA

MOSCATEL
ROXO

VERDELHO

BASTARDO
PRETA

THE SOURCE



ARRIBAS WINE COMPANY

PLANALTO MIRANDÊS - TRÁS-OS-MONTES

www.thesourceimports.com/producers/arribas-wine-company/

In the early summer of 2017, Ricardo Alves and Frederico Machado were on the Portuguese back roads in the Parque Natural das Arribas do Douro searching for their future wine project. They settled on Bemposta, with its wealth of ancient, indigenous and largely forgotten grapevines chaotically perched on the extreme slopes on the Douro river gorge. They've set out to rediscover and revitalize an ancient wine culture whose local home winegrowers have just barely kept the faint bloodline of their vinous history from extinction. Their high tension, aromatic, low alcohol wines are blends composed of dozens of different varieties made with minimalistic cellar practices.

				Frontline		Discounts	
				Case	Bottle	5%	10%
2022	Vinho Rosé, <i>Saroto</i>	750	12	\$252.00	\$21.00	\$19.95	\$18.90
2022	Vinho Branco, <i>Saroto</i>	750	12	\$216.00	\$18.00	\$17.10	\$16.20
2021	Vinho Tinto, <i>Saroto</i>	750	12	\$216.00	\$18.00	\$17.10	\$16.20 *
2019	Vinho Tinto, <i>Raiola</i>	750	12	\$360.00	\$30.00	NET	NET
2019	Vinho Tinto, <i>Quilómetro</i>	750	12	\$480.00	\$40.00	NET	NET

MATEUS NICOLAU DE ALMEIDA

DOURO SUPERIOR, DOURO

www.thesourceimports.com/producers/mateus-nicolau-de-almeida/

Mateus Nicolau de Almeida and his wife, Teresa Ametztoy, began their organic/biodynamic/natural wine project in 2015. Organically farmed and certified, their wines reflect the attributes of a combination of vineyards in the different subregions of Douro and a multitude of indigenous grape varieties. The Trans Douro Express are three “climate” reds from roughly ten different vineyards that demonstrate what each subregion has to offer: Baixo Corgo in the west is the coldest and wettest, on the far east, on the border of Spain, is Douro Superior, the driest and warmest, while in the center is Cima Corgo, a climatic balance of the two extremes. Each of these wines illustrates the differences in climate, which, of course, is determined by the variety of grapes suitable for each area. Eremitas are three white wines from the Douro Superior and express three different schist-based terroirs. Made only in particular years, the Curral Teles their “human wines,” are their most experimental, linkered with in the cellar (including one wine aged inside a granite block!) to discover new gateways to different expressions and nuances. There are also two stellar (but in very low supply), traditionally crafted Port wines, Lágrima (white Port) and Ruby Seco. The wines are often lightly filtered (though the whites that don't go through malolactic are sterile filtered) and they are rarely fined.

				Frontline		Discounts	
				Case	Bottle	5%	10%
2021	Douro Branco, Eremitas, <i>Amon de Kelia</i>	750	12	\$276.00	\$23.00	\$21.85	\$20.70
2021	Douro Tinto, Trans-Douro-Express, <i>Baixo Corgo</i>	750	12	\$216.00	\$18.00	\$17.10	\$16.20
2021	Douro Tinto, Trans-Douro-Express, <i>Cima Corgo</i>	750	12	\$216.00	\$18.00	\$17.10	\$16.20
2021	Douro Tinto, Trans-Douro-Express, <i>Superior</i>	750	12	\$216.00	\$18.00	\$17.10	\$16.20
2019	Douro Tinto, Curral Teles, <i>Alpha</i>	750	12	\$324.00	\$27.00	NET	NET

QUINTA DA CAROLINA

CIMA CORGO, DOURO

www.thesourceimports.com/producers/quinta-da-carolina/

The Douro property that was once in the hands of California trailblazing winemaker, Jerry Luper, (whose illustrious wine career included tenures at Château Montelena, Bouchaine, and Rutherford Hill), has been for years now under the ownership of Luis Candido da Silva, a well-known wine retailer in Porto. Today, the winery has been slowly taken over by his son, also named Luis, and things are going through some noticeable changes the more Luis Jr. commits himself to the project. His day job is working as the head enologist and wine director for the still Douro wine program at Dirk Niepoort's ever expanding, global wine empire. Niepoort has a history of recognizing talent and churning out many superstars in Portugal, most notably Luis Seabra, the boys over at Arribas Wine Company (also in our portfolio), and starting in 2018, Luis Jr. The respect he has garnered at a very young age in Portugal speaks volumes for the confidence the local wine world has in his skill and attention to detail. Exciting things are in store for this very small estate with wines that cover both the traditional style like his father's, and the extreme progressivism of his generation, with a gorgeous touch, exquisite crafting and a razor-sharp attention to detail. Expect big things, albeit in very small quantities (unfortunately) from this special Quinta.

				Frontline		Discounts	
				Case	Bottle	5%	10%
2019	Douro Tinto, <i>Xisto Amarelo</i>	750	12	\$432.00	\$36.00	NET	NET
2017	Douro Tinto, <i>Quinta da Carolina</i>	750	12	\$384.00	\$32.00	NET	NET
2019	Vinho Tinto, <i>Elemento</i>	750	12	\$360.00	\$30.00	NET	NET

TAPADA DO CHAVES

PORTALEGRE - ALENTEJO

www.thesourceimports.com/producers/tapada-do-chaves/

There are few Portuguese wineries as mythical as Tapada do Chaves. Its line of extraordinary successes produced from vines planted in 1901 and 1903 by Senhor Chaves fell off the map when they were sold in the 1990s to a sparkling wine company. The property's fortune changed with its purchase in 2017 by Fundação Eugénio de Almeida under the direction of Pedro Baptista, one of Portugal's most celebrated oenologists most famously known for producing Pera Manca, some of the country's most prized (and expensive) wines. Immediately these historic vineyards planted on a unique granite massif that towers over the flatter lands more typical of Alentejo below were converted to biodynamic farming, priming Tapada do Chaves to reassert itself as one of Portugal's most preeminent terroirs. The white wines are blends of Arinto, Assario, Fernão Pires, Tamarez, and Roupeiro, with the reds Trincadeira, Grand Noir, Aragonez, and Alicante Bouschet.

				Frontline		Discounts	
		Case	Bottle	5%	10%		
2018	Vinho Branco	750	12	\$312.00	\$26.00	NET	NET
2018	Vinho Branco, Vinhas Velhas	750	6	\$480.00	\$80.00	NET	NET

ESPAÑA



RIBEIRA SACRA
SUBZONE
AMANDI

XESTEIRIÑA

RÍAS BAIXAS - GALICIA

www.thesourceimports.com/producers/acios-da-xesteirina/

Xesteirina is destined to be yet another Salnés Vally Albariño superstar. This singular wine that comes in two forms, with added sulfites and without, comes from a single vineyard just west of Portonovo, two kilometers from the Atlantic. The project and property are owned and operated by the extremely sharp and thoughtful José Manuel Dominguez, an Agricultural Engineer who comes from three generations of winegrowers in Salnés. It's a unique geological location largely composed of granodiorite and what may be some transitional materials similar to gneiss, the extremely spare topsoil is derived from the bedrock though almost entirely composed of organic matter. Surrounded by forests of mostly indigenous Galician trees (rare in these parts overrun by Eucalyptus), approaching the vineyard takes caution and respect for the ecological environment. Organic methods guide his work, despite his being so close to the ocean a hostile environment for mildew and vine diseases.

				Frontline		Discounts	
		Case	Bottle	5%	10%		
2021	Rias Baixas Albariño, <i>San Soufre</i>	750	12	\$360.00	\$30.00	NET	NET

PEDRO MÉNDEZ

RÍAS BAIXAS - GALICIA

www.thesourceimports.com/producers/pedro-mendez/

Cousin of local viticultural legend, Rodrigo Méndez, Pedro Méndez wears two hats with full-time work in his family's vineyards and their restaurant during the summer. Located in the Salnés subzone of Galicia's Rías Baixas, he has medium-aged vines and pre-phylloxera Albariño vines that are nearly two-hundred years old that look more like trees. These ancient plants fill his full-bodied Albariños with structure and a pure citrusy, salty, minerally, high acidity power that only Albariño possesses. He also makes a compelling range of red wines with Mencia and Caño.

				Frontline		Discounts	
		Case	Bottle	5%	10%		
2021	Rias Baixas Albariño, <i>Sen Etiqueta</i>	750	12	\$252.00	\$21.00	\$19.95	\$18.90
2019	Rias Baixas Albariño, <i>As Abeleiras - 9 bottles left</i>	750	12	\$312.00	\$26.00	NET	NET

MANUEL MOLDES

RÍAS BAIXAS - GALICIA

www.thesourceimports.com/producers/manuel-moldes/

One of the brightest lights in the slowly rising tide of the Rías Baixas, Manuel Moldes has an aptitude for finely tuned, deeply technical wine analysis, but it's his curiosity and open mind that guide him. Manuel's approach to his Albariño range is to have wines with notable differentiating characteristics; they either contrast the soil type altogether, whether it be completely on schist, the A Capela de Aios, or those granite parcels bottled as Afelio; or the particularities within a rock and soil type to illuminate their differences and are compelling enough to be bottled alone, like As Dunas, from sandy schist soil with no bedrock contrasts A Capela de Aios, grown on shallow schist topsoil with a soft schist bedrock. The simplicity of the red winemaking follows suit with the Albariños, but involves the art of blending different grape varieties from numerous terroirs into one wine. Acios Mouros, a blend of 60% Caño Redondo, 20% Loureiro Tinto, 20% Espadeiro, is an extremely high-toned red from the Rías Bixas, and his Bierzo, a more supple red blended with 60% Garnacha Tintorera and 40% Mencia.

2022	Rias Baixas Albariño, <i>Afelio</i>	750	12	Allocated - Please Inquire			
2021	Rias Baixas Albariño, <i>Peai</i>	750	12	Allocated - Please Inquire			
2021	Rias Baixas Albariño, <i>As Dunas</i>	750	12	Allocated - Please Inquire			
2021	Rias Baixas Albariño, <i>Acapela de Aios</i>	750	12	Allocated - Please Inquire			
2021	Bierzo Tinto, <i>Lentura</i>	750	12	Allocated - Please Inquire			
2020	Rias Baixas Tinto, <i>Acios Mouros</i>	750	12	Allocated - Please Inquire			

EL PARAGUAS

RIBEIRO - GALICIA

www.thesourceimports.com/producers/bodegas-el-paraguas/

Wine journalist and winemaker, Marcial Pita, and award-winning and fourth generation enologist and viticulturist, Felicísimo Pereira, met while sitting in on panels for Spanish wine competitions. They found that they often picked the same wines as the best of each show and decided to team up in 2007 to begin their project. In 2011, they finally released the first vintage of their Ribeiro based garage winery, Bodegas Paraguas, and quickly caught the attention of the region and many of Spain's top sommeliers. One of Pereira's specialties has been mining the countryside for nearly forgotten grape varieties and bringing them into the conversation of Galician wines. Bodegas Paraguas works exclusively in Ribeiro and principally with the white grape variety, Treixadura (90%). They veer on the side of picking early and working with a mix of high elevation sites and work to respect nature by not using herbicides or pesticides, and doing everything by hand (or horse, in the case of plowing). The stunning results of their high-elevation and early picked wines closely resemble a wine from Burgundy's Côte d'Or in weight and complexity, but remain true to the taste of the Ribeiro, with honeyed citrus blossoms, saltiness and white fruits.

				Frontline		Discounts	
				Case	Bottle	5%	10%
2017	Ribeiro, Blanco, <i>Atlantico</i> - 7 bottles left	750	12	\$276.00	\$23.00	\$21.85	\$20.70
2020	Ribeiro, Blanco, <i>Atlantico</i>	750	12	\$300.00	\$25.00	\$23.75	\$22.50
2018	Ribeiro Blanco, <i>La Sombrilla</i>	750	12	\$492.00	\$41.00	NET	NET

AUGALEVADA

RIBEIRO - GALICIA

www.thesourceimports.com/producers/fazenda-augalevada/

Iago Garrido may be destined to become one of Spain's most influential winegrowers. In 2014 this former professional soccer player buried an amphora filled with Treixadura in the middle of his granite vineyard inside Ribeiro's Avia River Valley. Initially convinced he had made a mistake with the discovery of a flor yeast veil, he later realized this errant shot actually hit a vein of gold that went on to define the direction of his wines. What makes Iago's wines special is not only that he welcomes the influence of flor yeast, or that he is committed to biodynamic practices in his cellar and the vineyards he owns and the ones he works directly himself, and to only using a minuscule dose of sulfur in his wines, it's his razor-sharp attention to detail coupled with his openness to take in the ideas and opinions of others. His creative range is focused on indigenous Galician varieties with many different bottlings.

				Frontline		Discounts	
				Case	Bottle	5%	10%
2021	Branco, <i>Mercenario</i>	750	12	Allocated - November 2023 Arrival			
2019	Branco, Albariño, <i>Parcela Eiravera</i> - 11 bottles left	750	12	\$300.00	\$25.00	NET	NET
2018	Branco, <i>Ollos de Roque</i> - 9 bottles left	750	12	\$324.00	\$27.00	NET	NET
2019	Branco, <i>Ollos de Roque</i> - 5 bottles left	750	12	\$324.00	\$27.00	NET	NET
2020	Branco, <i>Ollos de Roque</i>	750	12	\$336.00	\$28.00	NET	NET
2020	Tinto, <i>Mercenario</i>	750	12	\$276.00	\$23.00	NET	NET
2021	Tinto, <i>Mercenario</i>	750	12	\$252.00	\$21.00	NET	NET
2020	Tinto, <i>Mercenario, Selección de Anada</i> - 2 bottles left	750	12	\$300.00	\$25.00	NET	NET

CUME DO AVIA

RIBEIRO - GALICIA

www.thesourceimports.com/producers/cume-do-avia/

Diego and his brother, Álvaro, grew up in Vigo, northwestern Spain's largest metropolitan and industrial area. The bustle of city life wasn't in their blood, so in their early twenties they embarked on the courageous restoration of vineyards with their cousins, Anxo and Fito, in an ancient Galician ruin where their ancestors once lived. They started their new lifelong adventure together in 2005 that ultimately pushed them to the brink of financial ruin and tested their relationships with each other and many of their loved ones. The vineyards are surrounded by dense forest and sit on the top of a hill (a Cume) above the river Avia. By 2008 they planted their first vines, and in 2012 finally made their first vinification "tests," as Diego calls them; it was the first time any of them had ever made wine. On the vineyard are thirteen different indigenous Galician varietals selected from ancient vines in the Ribeiro. "The past of these forgotten grapes has been erased, leaving no one to discuss the ideal practices for them. Much knowledge was discarded with the introduction of chemicals to the vineyards after the second World War and there is no manual or record. We are trying to reinvent and rebuild this lost history," Diego explained. In what they would consider their first real vintage, the 2017 wines are gorgeous and taut with energy. They are not to be missed by those interested in the rise of Galician wines.

				Frontline		Discounts	
				Case	Bottle	5%	10%
2021	Branco, Arraiano	750	12	\$216.00	\$18.00	\$17.10	\$16.20 *
2020	Branco, Colleita No. 8	750	12	\$252.00	\$21.00	\$19.95	\$18.90
2021	Branco, Colleita No. 9	750	12	\$264.00	\$22.00	\$20.90	\$19.80
2020	Tinto, Arraiano	750	12	\$216.00	\$18.00	\$17.10	\$16.20
2021	Tinto, Arraiano	750	12	\$216.00	\$18.00	\$17.10	\$16.20 *
2020	Tinto, Colleita No. 8	750	12	\$252.00	\$21.00	\$19.95	\$18.90
2021	Tinto, Colleita No. 9	750	12	\$264.00	\$22.00	\$20.90	\$19.80 *
2018	Tinto, Caiño Longo	750	12	\$368.00	\$30.67	NET	NET
2019	Tinto, Dos Canotos - 1.5 cases left	750	12	\$300.00	\$25.00	\$23.75	\$22.50

PRÁDIO

RIBEIRA SACRA - GALICIA

www.thesourceimports.com/producers/fazenda-pradio/

Xabi Soeanes is in love with his Galician countryside, and he's even more taken in by its nearly forgotten past. His greatest desire, his dream, is to share this cultural treasure with the world, through the lens of his varietally blended wines - the historical winegrowing practice of this area. Fazenda Prádio (named after a local tree known as a false maple, or sycamore) is located within the Chantada subzone, one of the coldest of Ribeira Sacra, heavily influenced by the Atlantic. His 3.5ha of vines, a collection of Mencía, Caiño Longo, Merenzao, Brancellao, Godello, and other indigenous varieties, are perched on wide terraces between 180-300m that overlook the Miño River gorge and are carved out of a steep hill of granite and schist. Xabi practiced organic and biodynamic farming for years but after a series of seasons that almost put him out of business, he keeps the door open to move freely when needed.

				Frontline		Discounts	
				Case	Bottle	5%	10%
2019	Ribeira Sacra Branco, Pacio	750	12	\$480.00	\$40.00	NET	NET
2021	Ribeira Sacra Tinto, Mencia	750	12	\$264.00	\$22.00	\$20.90	\$19.80 *
2019	Ribeira Sacra Tinto, Caiño Longo	750	12	\$432.00	\$36.00	NET	NET
2019	Ribeira Sacra Tinto, Brancellao - 6 bottles left	750	12	\$432.00	\$36.00	NET	NET
2018	Ribeira Sacra Tinto, Pacio	750	12	\$480.00	\$40.00	NET	NET
2019	Ribeira Sacra Tinto, Pacio	750	12	\$480.00	\$40.00	NET	NET
2021	Ribeira Sacra Tinto, Pacio	750	12	\$480.00	\$40.00	NET	NET

SAIÑAS

RIBEIRA SACRA - GALICIA

www.thesourceimports.com/producers/adega-sainas/

At The Source, we are infatuated with terroir but we're even more infatuated by the people. It's the influence of those who work the terroirs that has a greater voice than any other element of a wine. Every grape winegrower Pablo Soldavini comes in contact with seems to benefit from his touch – somehow this Galician outsider has that special instinct, and his ability to quickly understand the nature of a terroir and to coax it into breakout performance is a rare thing indeed. As the Cabe river meanders southwest into the Ribeira Sacra subzone, Ribeiras do Miño, eight or nine kilometers before it spills into the Sil, are the winery and vineyards of Saiñas. Saiñas has five main vineyards that all sit around three hundred meters of altitude and they are located in a geologically complex system within this area of the Ribeiras do Miño. Mencía is the headline grape here, but there is a treasure trove of local indigenous grape varieties nearing one hundred years. Castro das Saiñas is pure Mencía from a steep granite outcrop, and O Boliño a field blend on gently terraced granite slopes.

				Frontline		Discounts	
				Case	Bottle	5%	10%
2020	Ribeira Sacra Tinto, <i>Granito Rosa</i>	750	12	\$228.00	\$19.00	\$18.05	\$17.10
2020	Ribeira Sacra Tinto, <i>Castro das Saiñas</i>	750	12	\$240.00	\$20.00	\$19.00	\$18.00
2020	Ribeira Sacra Tinto, <i>Saiñas o Bolino - 13 bottles left</i>	750	12	\$300.00	\$25.00	\$23.75	\$22.50

FUENTES DEL SILENCIO

JAMUZ - CASTILLA Y LEÓN

www.thesourceimports.com/producers/fuentes-del-silencio/

The story of Fuentes del Silencio is of Indiana Jones-level proportions for lost and nearly forgotten wine cultures. Miguel Angel Alonso and his wife Maria José Galera, retired doctors and hobby winemakers, have stumbled on and excavated one of the rarities of the wine world. In the south of Leon province, up on the high plains of Herreros de Jamuz, among forests and fields of shrubs, they discovered the ancient Mencía vineyards buried under grounds that predate the phylloxera epidemic. There they started a rescue mission, restoring many of the old vines and putting them back into production. Miguel and Maria developed a team of passionate wine professionals – who seem more like archeologists, and taken on the task of bringing this Spanish treasure trove back to its former glory with a minimalist approach in the cellar. The youngest vines of their collection of parcels were registered as planted in 1930, but the oldest locals told Miguel stories about their grandfathers planting the last set of vines closer to the turn of the century, after phylloxera had passed through. I've seen a lot of unique looking vines, but I've never come across anything that looked like hairy little square animals, dug into the ground, with vine shoots sprouting from their backs.

				Frontline		Discounts	
				Case	Bottle	5%	10%
2019	Viñedos del Jamuz Rosso, <i>Las Jaras</i>	750	12	\$216.00	\$18.00	\$17.10	\$16.20 *
2019	Viñedos del Jamuz Rosso, <i>Las Quintas</i>	750	12	\$348.00	\$29.00	NET	NET
2016	Viñedos del Jamuz Rosso, <i>La Gándara</i>	750	6	\$324.00	\$54.00	NET	NET

EL CAPRICO BODEGAS GORDON

JAMUZ - CASTILLA Y LEÓN

www.thesourceimports.com/producers/bodegas-gordon/

José Gordon has been a celebrity chef in Spain for a while, known mostly for his extremely high-quality steakhouse, El Capricho. But as one descends into the dark, orange-hued, dimly lit, and deeply shadowy, hand-carved clay cave of El Capricho with table after table, catching unfamiliar words spoken by familiar accents from all corners of the globe, it quickly becomes obvious that he's actually world famous. José has since turned a lot of attention to his wine project, a continuation of his grandfather's work and the ancient Mencía vines that average more than 100 years old (some own-rooted, pre-phylloxera) and grown in the high desert between 800-1000m on iron-rich clay and sand that originated in the slate soils of nearby Monte Teleno, the tallest peak in the Galician Mountains.

				Frontline		Discounts	
				Case	Bottle	5%	10%
2019	Tinto, <i>El Chano</i>	750	12	\$372.00	\$31.00	NET	NET *

CÉSAR FERNÁNDEZ DÍAZ

RIBERA DEL DUERO - CASTILLA Y LEÓN

www.thesourceimports.com/producers/cesar-fernandez-diaz/

I am looking for a wine with minerality, elegance, acidity, and austerity in a fine, narrow and raw way. I am not looking for wines with an excess of explosive and opulent fruit, but rather more mineral-driven wines with tension and electricity on the palate – wines with definitive character.” Part-time musician and full-time organic wine grower, César Fernández Díaz focused on his garage-size project after enology school followed by a decade working with Spanish wine revolutionaries like Bernabeveva and Commando G. Based in Ribera del Duero, though not under D.O. certification, he is focused on replanting ancient, abandoned sites and reclaiming forgotten ones for his organic Tempranillo-based wines.

				Frontline		Discounts	
				Case	Bottle	5%	10%
2020	Castilla y Leon Clarete, <i>Espantaburros</i>	750	12	\$240.00	\$20.00	\$21.05	\$18.00
2018	Castilla y Leon Tinto, <i>Espantaburros</i>	750	12	\$264.00	\$22.00	\$20.90	\$19.80
2018	Castilla y Leon Tinto, <i>Carremolino - 4 bottles available</i>	750	12	\$384.00	\$32.00	NET	NET
2019	Castilla y Leon Tinto, <i>Carremolino</i>	750	12	\$372.00	\$31.00	NET	NET
2020	Castilla y Leon Tinto, <i>Carremolino</i>	750	12	\$372.00	\$31.00	NET	NET

ALFREDO EGIA

BIZKAIKO TXAKOLINA - PAÍS VASCO

www.thesourceimports.com/producers/alfredo-egia/

The wines made in Txakoli by Alfredo Egia are radical for the region but not for the world, since he is fully committed to biodynamic farming and natural wine methods. And with the influence of Imanol Garay, the highly intense and fully committed naturalist from France whom he refers to as his mentor, he’s determined to harness the intense energy of Izkiriota Txikia (Petit Manseng) and Hondarrabi Zerratia (Petit Courbu) to give them an altogether different expression, shape and energy, with a constant evolution upon opening that can last for days. These white wines walk the line with no added sulfur and should be consumed earlier in their life to ensure captivity of their best moment. Whether they can age well or not remains to be seen, but since they have very low pH levels that usually sit below 3.20, and ta levels that can be well above 7.00, they should be insulated for a while. Rebel Rebel is the solo project of Alfredo, and Hegan Egin a joint venture between Alfredo, Imanol and Gile Iturri.

				Frontline		Discounts	
				Case	Bottle	5%	10%
2021	Bizkaiko Txakolina, Blanco, <i>Izaki</i>	750	12	\$312.00	\$26.00	NET	NET
2020	Bizkaiko Txakolina, <i>Rebel Rebel</i>	750	12	\$432.00	\$36.00	NET	NET

JOSÉ GIL

RIOJA ALTA - LA RIOJA

www.thesourceimports.com/producers/jose-gil/

The young and open-minded José Gil and his Uruguayan life partner, Vicky, are major influencers in the new generation of Rioja grower-producers focused on single-site, organically farmed wines. Located near Rioja Alta’s famous San Vicente de la Sonsierra, most of the vineyards sit at higher altitudes that stretch the limitations of the region’s naturally long ripening season. Employing straightforward cellar practices with fermentation and aging in small to medium-sized barrels, José’s wines are direct, aromatic, fully flavored and driven by each wine’s terroir. José gives weight to the influence of the surrounding area, mostly from the mountains just to the north, and handles the wines gently to retain the area’s identity beyond the vineyards. The production is miniscule but on the rise.

				Frontline		Discounts	
				Case	Bottle	5%	10%
2021	Rioja Tinto, <i>Labastida</i>	750	6	Allocated - Sold Out - Please Inquire			
2021	Rioja Tinto, <i>Parcela El Bardallo</i>	750	6	Allocated - Sold Out - Please Inquire			
2021	Rioja Tinto, <i>Parcela La Conoca</i>	750	6	Allocated - Sold Out - Please Inquire			
2021	Rioja Tinto, <i>Vñedos de San Vicente de la Sonsierra</i>	750	6	Allocated - Sold Out - Please Inquire			
2021	Rioja Tinto, <i>Camino de Ribas, Parcela La Concova</i>	750	6	Allocated - Sold Out - Please Inquire			

ARTUKE

RIOJA ALAVESA - LA RIOJA

www.thesourceimports.com/producers/artuke/

Artuke's Arturo Miguel is a quiet but influential leader of a new movement of young Spanish vignerons in Rioja, the country's most historically famous region. The agenda is to bring attention back to specific terroirs and return the power to the growers themselves. He is the second generation of his family to grow and bottle their own wines since the end of the dictatorship, and when he took control of the family's vineyards, he converted them all to organic farming. His cellar techniques are straightforward, with older barrels of different shapes and sizes that highlight the differences between the four specific vineyard wines, except for the ARTUKE bottling made with carbonic maceration, a long-standing tradition with local wines, and Pies Negros, Spanish for black feet, a reference to the foot-stomping of the grapes, which is a blend of many different parcels. All wines come from calcareous sandstone (similar in structure and mineral makeup to sandstones from Barolo and Barbaresco) with varying degrees of sand and clay.

				Frontline		Discounts	
				Case	Bottle	5%	10%
2021	Rioja Tinto, <i>ARTUKE</i>	750	12	\$156.00	\$13.00	\$12.35	\$11.70
2019	Rioja Tinto, <i>Pies Negros</i>	750	12	\$192.00	\$16.00	\$15.20	\$14.40
2020	Rioja Tinto, <i>Pies Negros - 1.75 cases left</i>	750	12	\$216.00	\$18.00	\$17.10	\$16.20
2020	Rioja Tinto, <i>Finca de los Locos</i>	750	6	\$174.00	\$29.00	NET	NET
2020	Rioja Tinto, <i>Paso Las Mañas</i>	750	6	\$216.00	\$36.00	NET	NET
2020	Rioja Tinto, <i>Escolladero</i>	750	6		Allocated - Sold Out		
2020	Rioja Tinto, <i>La Condenada</i>	750	6		Allocated - Sold Out		

ARIZCUREN

RIOJA ORIENTAL - LA RIOJA

www.thesourceimports.com/producers/arizcuren/

Well-known and highly respected architect turned winegrower, Javier Arizcuren is one of Rioja Oriental's most exciting new talents. With the help of his father, Javier spends his "spare time" focused on rescuing high-altitude, ancient Grenache and Mazuelo (the local name for Carignana), on vineyards that managed to survive both phylloxera, and the trend of replacing historic vines with Tempranillo, an early-ripening grape that is only a small part of this region's history despite its dominance today. His experience with architecture leads him down rabbit holes of possibility and experimentation (a rarity in this often predictable and extremely conservative wine region), so that he may better understand the aesthetic of each site and build on its strengths using various fermentation and aging techniques.

				Frontline		Discounts	
				Case	Bottle	5%	10%
2022	Rioja Rosado	750	12	\$252.00	\$21.00	\$19.95	\$18.90
2019	Rioja Tinto, <i>Monte Gatún</i>	750	12	\$276.00	\$23.00	\$21.85	\$20.70
2021	Rioja Tinto, <i>Monte Gatún</i>	750	12	\$276.00	\$23.00	\$21.85	\$20.70
2017	Rioja Tinto, <i>Solomazuelo</i>	750	12	\$372.00	\$31.00	NET	NET
2019	Rioja Tinto, <i>Sologarnacha (Anfora)</i>	750	12	\$492.00	\$41.00	NET	NET
2020	Rioja Tinto, <i>Solograciano</i>	750	12	\$456.00	\$38.00	NET	NET

ASEGINOLAZA & LEUNDA

NAVARRA

www.thesourceimports.com/producers/aseginolaza-y-leunda/

Environmental biologists and former winemaking hobbyists, Jon Aseginolaza and Pedro Leunda, have directed their full attention to a project focused on a better understanding of Spain's Navarra, a historical region with a severe identity crisis stemming from its living in the shadow of its illustrious neighbor, Rioja, Spain's historical crown jewel. Always the bride's maid and never the bride, the region began to focus on international varieties to stand out and increase its market share. Moving in the opposite direction of this trend, Jon and Pedro are focused on finding and recovering old vineyards planted with indigenous ancient genetic material (mostly Grenache, the historic grape of the region) inside vastly biodiverse areas - all assets that give the region a possible edge on the widely monocultural approach of much of Rioja. The life and authenticity in their first wines (started in 2017) are clear and their future is promising.

				Frontline		Discounts	
				Case	Bottle	5%	10%
2019	Navarra Tinto, <i>Cuvée</i>	750	12	\$312.00	\$26.00	NET	NET
2020	Navarra Tinto, <i>Cuvée</i>	750	12	\$324.00	\$27.00	NET	NET
2019	Navarra Tinto, <i>Cuvée Las Santas - 1.5 cases</i>	750	12	\$372.00	\$31.00	NET	NET
2020	Navarra Tinto, <i>Cuvée Las Santas</i>	750	12	\$384.00	\$32.00	NET	NET
2018	Navarra Tinto, <i>Camino de Santa Zita - 8 bottles left</i>	750	12	\$408.00	\$34.00	NET	NET
2020	Navarra Tinto, <i>Camino de Santa Zita - 1 case left</i>	750	12	\$408.00	\$34.00	NET	NET
2020	Navarra Tinto, <i>Camino de La Torraza</i>	750	12	\$408.00	\$34.00	NET	NET

* - Special Pricing Available

CHILE



LEO ERAZO
ITATA VALLEY
VINEYARDS AFTER THE 2023 FIRE

VIGNERON FINE WINES

VALLE DEL ITATA & VALLE DEL MAIPO, REGIÓN VITÍCOLA DEL SUR

				Frontline		Discounts	
				Case	Bottle	5%	10%
2021	Itata Tinto , Cinsault, <i>Cuvée China</i>	750	6	\$162.00	\$27.00	NET	NET
2021	Maipo Tinto , Malbec, <i>Tinto de la Reina, Cuvée Laura</i>	750	6	\$144.00	\$24.00	\$22.80	\$21.60

VIÑATEROS BRAVOS

VALLE DEL ITATA, REGIÓN VITÍCOLA DEL SUR

www.thesourceimports.com/producers/a-los-vinateros-bravos/

Leonardo Erazo is a rare talent. After graduating from the University of Chile with a degree in Agronomy and Enology, he traveled the world for a decade working for various estates doing research in soil science, geology and biodynamics. We have worked with many winemakers over the years and few speak with as much humility and authority as he does, and on such a broad array of subjects that pertain to winemaking and viticulture. Leo's minimalistic style of winemaking and growing requires exceptional discretion on his part, combining some modern techniques with established traditions. He believes that the best dry-farmed ancient vineyards found in the Itata Valley require as little stylizing as possible to showcase the deep expression of their terroirs. While employing biodynamic principals, he uses the advice of the experienced local farmers who have been naturally farming this region for centuries.

				Frontline		Discounts	
				Case	Bottle	5%	10%
2022	Itata Blanco , <i>Pipeño</i>	1000	12	\$168.00	\$14.00	\$13.30	\$12.60
2022	Itata Tinto , <i>Pipeño</i>	1000	12	\$168.00	\$14.00	\$13.30	\$12.60 *
2022	Itata, Tinto , País <i>Granítico</i>	750	12	\$168.00	\$14.00	\$13.30	\$12.60
2022	Itata, Tinto , País <i>Volcánico</i>	750	12	\$168.00	\$14.00	\$13.30	\$12.60 *
2022	Itata, Tinto , Cinsault <i>Granítico</i>	750	12	\$168.00	\$14.00	\$13.30	\$12.60
2021	Itata Tinto , Cinsault, <i>Leonardo Erazo, El Túnel</i>	750	12	\$204.00	\$17.00	\$16.15	\$15.30
2019	Itata Tinto , Cinsault, <i>Leonardo Erazo, Las Curvas</i>	750	12	\$260.00	\$21.67	\$20.58	\$19.50
2019	Itata Tinto , Carignan, <i>Leonardo Erazo, El hombre en llamas</i>	750	12	\$260.00	\$21.67	\$20.58	\$19.50

ÖSTERREICH



PETER VEYDER-MALBERG

VEYDER-MALBERG

SPITZ - WACHAU

www.thesourceimports.com/producers/peter-veyder-malberg/

The problem with Peter's wines is that there is too much to think about when tasting them, and they can be the most sublime and pure expression of any wine created on this planet. Peter Veyder-Malberg, or as I refer to him, Peter Pan, rages with ideology and a child-like enthusiasm for his vineyards. He is well beyond organic or biodynamic production with his thinking and spends his time cultivating positive working relationships with his insects or conversing with mushrooms and microorganisms that live in the root systems of his vines. Peter is a bit of a wizard and seems to have come from nowhere, or maybe, Neverland. In Peter's town in Austria's Wachau wine region, Spitz, Riesling and Gruner Veltliner thrive on the steeply terraced hills along the Danube River bank and principally grow on gneiss and loess soils.

				Frontline		Discounts	
				Case	Bottle	5%	10%
2019	Grüner Veltliner, Wachauer Terrassen	750	12			Allocated - Sold Out	
2021	Grüner Veltliner, Wachauer Liebedich	750	12			Allocated - Sold Out	
2021	Grüner Veltliner, Wösendorfer Hochrain	750	6	\$360.00	\$60.00	NET	NET
2021	Grüner Veltliner, Weißenkirchner Weitenberg	750	12	\$948.00	\$79.00	NET	NET
2015	Grüner Veltliner, Alter Native	750	6	\$360.00	\$60.00	NET	NET
2021	Riesling, Viesslinger Bruck	750	6			Allocated - Sold Out	
2021	Riesling, Weissenkirchner Buschenberg	750	12	\$1,272.00	\$106.00	NET	NET
2021	Riesling, Elsarner Brandstatt	750	6	\$642.00	\$107.00	NET	NET
2020	Riesling, Schöner	750	6	\$348.00	\$58.00	NET	NET

TEGERNSEERHOF

UNTERLOIBEN - WACHAU

www.thesourceimports.com/producers/weingut-tegernseerhof/

Martin Mittelbach is a Wachau insider with an outsider's perspective. Martin took over the estate at a very young age and immediately changed the way things were done. As you could imagine, there was some friction with his father who preferred to make wines more on the sweeter side. Today, you would be hard pressed to find a more dry and straight style in the Wachau. The grapes are harvested and sorted rigorously to take out any botrytis grapes and then vinified and raised in stainless steel. They are harvested with no botrytis to keep the wines focused and tense. His wines are like his personality: intense, focused and highly intellectual. These laser beams are as far away from the often baroque style that can be found in this region. In every level his wines excel and can stand tall next to any of the greatest producers in Austria.

				Frontline		Discounts	
				Case	Bottle	5%	10%
2021	Grüner Veltliner, Federspiel, Dürnstein	750	12	\$228.00	\$19.00	\$18.05	\$17.10
2022	Grüner Veltliner, Federspiel, Dürnstein	750	12	\$228.00	\$19.00	\$18.05	\$17.10
2022	Grüner Veltliner, Federspiel, Superin	750	12	\$240.00	\$20.00	\$19.00	\$18.00
2022	Grüner Veltliner, Smaragd, Bergdistel	750	12	\$300.00	\$25.00	\$23.75	\$22.50
2022	Grüner Veltliner, Smaragd, Loibenberg	750	12	\$408.00	\$34.00	NET	NET
2021	Grüner Veltliner, Smaragd, Höhereck	750	12	\$432.00	\$36.00	NET	NET
2021	Grüner Veltliner, Smaragd, Schütt	750	12	\$432.00	\$36.00	NET	NET
2022	Riesling, Federspiel, Dürnstein	750	12	\$216.00	\$18.00	\$17.10	\$16.20
2019	Riesling, Smaragd, Bergdistel	750	12	\$276.00	\$23.00	\$21.85	\$20.70
2021	Riesling, Smaragd, Bergdistel	750	12	\$300.00	\$25.00	\$23.75	\$22.50
2022	Riesling, Smaragd, Bergdistel	750	12	\$300.00	\$25.00	\$23.75	\$22.50
2019	Riesling, Smaragd, Loibenberg - 6 bottles left	750	12	\$312.00	\$26.00	NET	NET
2021	Riesling, Smaragd, Loibenberg	750	12	\$312.00	\$26.00	NET	NET
2021	Riesling, Smaragd, Steinertal	750	12	\$420.00	\$35.00	NET	NET
2021	Riesling, Smaragd, Kellerberg	750	12	\$420.00	\$35.00	NET	NET

MALAT

PALT - KREMSTAL

www.thesourceimports.com/producers/malat/

It is never easy to fill the shoes of a powerful and polarizing figure, like Gerald Malat, but Gerald's tall, handsome and forever smiling son, is doing just that. The previous level has been elevating under Michael's eagle-like eyes which have set him on his upward climb. At this estate, even the entry-level wines find absolute deliciousness and express enough intellect to enamor us wine geeks. Kremstal is one of the most recent DAC to be added to Austria. Founded in 2007, just west of the Wachau, this large appellation is divided into three significant zones. The most western part of the valley, near Stein, is primarily rocky soils, ideal for the elegant, yet intense, Riesling. As you move east toward Krems, deep loess soils cover the vineyards allowing Gruner Veltliner to express its highly aromatic and fresh nature. The third zone of the Kremstal is located on the southern banks of the Danube River, where some of the most pleasant wine villages are found.

				Frontline		Discounts	
				Case	Bottle	5%	10%
2017	Brut Rosé, Reserve	750	6	\$240.00	\$40.00	NET	NET
2016	Brut Nature, Reserve	750	6	\$252.00	\$42.00	NET	NET
2021	Gewurtztraminer, Orange	750	12	\$264.00	\$22.00	\$20.90	\$19.80 *
2021	Gelber Muskateller, RAW	750	12	\$264.00	\$22.00	\$20.90	\$19.80 *
2021	Grüner Veltliner, Furth	750	12	\$228.00	\$19.00	\$18.05	\$17.10
2019	Grüner Veltliner, Gottschelle - 2.75 cases left	750	12	\$396.00	\$33.00	NET	NET
2021	Grüner Veltliner, Höhlgraben	750	12	\$276.00	\$23.00	\$21.85	\$20.70
2021	Riesling, Furth	750	12	\$228.00	\$19.00	\$18.05	\$17.10
2019	Riesling, Steinbühel	750	12	\$384.00	\$32.00	NET	NET
2019	Riesling, Silberbichl	750	12	\$396.00	\$33.00	NET	NET
2019	Riesling, Pfaffenberg	750	12	\$396.00	\$33.00	NET	NET
2017	Pinot Noir, Sätzen - 2 bottles left	750	12	\$504.00	\$42.00	NET	NET

WESZELI

LANGENLOIS - KAMPTAL

www.thesourceimports.com/producers/wesze/

When all the elements of the ecosystem are in perfect harmony, wines develop their distinctive character that only nature can bring forth. Rupert Summerer: Rupert was born into a long lineage of winemakers and, though his dream growing up wasn't to take over the family estate, he nonetheless became the next generation. Davis Weszeli joined the winery in 2011 as a partner, at which time the estate was renamed. They practice organic viticulture and in the cellar they treat each wine based on its own unique character. The Weszeli estate is situated in the Kamptal region of Austria, where the summer days are hot and the cooler Northwest winds bring the cold, causing high diurnal fluctuations. The soils are a mix of loess, gneiss, and clay and the long growing season and sunny autumn days allow the grapes to reach full physiological maturity.

				Frontline		Discounts	
				Case	Bottle	5%	10%
2022	Grüner Veltliner, Langenlois	750	12	\$204.00	\$17.00	\$16.15	\$15.30
2021	Riesling, Loiserberg	750	12	\$264.00	\$22.00	\$20.90	\$19.80
2012	Riesling, Steinmassl - 2 cases left	750	12	\$420.00	\$35.00	NET	NET
2013	Riesling, Steinmassl	750	12	\$360.00	\$30.00	NET	NET
2017	Riesling, Steinmassl	750	12	\$444.00	\$37.00	NET	NET
2017	Riesling, Seeberg	750	12	\$528.00	\$44.00	NET	NET
2017	Riesling, Heiligenstein	750	12	\$720.00	\$60.00	NET	NET

BIRGIT BRAUNSTEIN

PURBACH AM NEUSIEDLERSEE - BURGENLAND

www.thesourceimports.com/producers/birgit-braunstein/

Not only a devout biodynamic farming practitioner since 2006, Birgit Braunstein lives a biodynamic life. A single mother since the birth of her two sons, Felix and Max, she steadily and quite remarkably advanced the quality of her family estate. Her vineyards are an interesting mix of limestone, mica schist, and crystalline quartz, which offers her range of wines a great deal of breadth and depth, and a multitude of compelling textures and mineral/metal impressions to go with their overt charm and exuberant personalities. Her vineyards are in Leitha Mountains on a gentle, southeast slope facing Lake Neusiedl. Her Zweigelt “Mitterjoch” is grown on schist soil and fermented in stainless steel that further encourages Zweigelt’s naturally bright and fresh red qualities. Classically darker and more textured, her Blaufränkisch wines are grown on limestone soils. Heide named after the vineyard comes from young vines and spends one year in old barrels. Leithaberg, from the old vines of the Heide and Glauberiza vineyards, has a lengthier wood aging and offers much greater complexity.

				Frontline		Discounts	
				Case	Bottle	5%	10%
2019	Sauvignon Blanc, Birgid, <i>Nimue</i>	750	12	\$384.00	\$32.00	NET	NET
2021	Pinot Blanc, Birgid, <i>Prinzen</i>	750	12	\$228.00	\$19.00	\$18.05	\$17.10
2020	Pinot Blanc, Birgid	750	12	\$384.00	\$32.00	NET	NET
2020	Chardonnay, <i>Felsenstein</i>	750	12	\$204.00	\$17.00	\$16.15	\$15.30
2019	Blaufränkisch, <i>Heide</i>	750	12	\$204.00	\$17.00	\$16.15	\$15.30
2016	Blaufränkisch, <i>Heide</i>	750	12	\$180.00	\$15.00	\$14.25	\$13.50
2017	Blaufränkisch, <i>Leithaberg</i>	750	12	\$360.00	\$30.00	NET	NET
2019	Zweigelt, <i>Mitterjoch</i>	750	12	\$204.00	\$17.00	\$16.15	\$15.30

DEUTSCHLAND



WASENHAUS
ALEX GÖTZE AND CHRISTOPH WOLBER

WECHSLER

WESTHOFEN - RHEINHESSEN

www.thesourceimports.com/producers/katharina-wechsler/

The German organic and biodynamic winegrower, Katharina Wechsler, has officially arrived. The owner of enviable holdings in the most famous dry Riesling area of the Rheinhessen (thanks to the local luminaries, Klaus-Peter Keller, and Philipp Wittman), the highlights in her stable include a big slab of the grand cru vineyard, Kirchspiel, and a small chunk of perhaps the most coveted of all recognized grand crus, Morstein. Between these two juggernaut vineyards of dry Riesling, her family owns entirely a large vineyard, called Benn. Only the upper section of Benn on the strongly calcareous sections is planted to Riesling, while much of the lower slopes are a patchwork of many different grape varieties that she loves to play with in her cellar, concocting things that range between pure pleasure and fun, savory orange wines, to more serious classically styled dry wines, like her knockout Scheurebe. The entry-level trocken Riesling will give any dry Riesling in all of Germany a run for the money but showcases the lifted and elegant exotic characteristics of Riesling only found in this part of the world.

				Frontline		Discounts	
				Case	Bottle	5%	10%
2021	Pinot Rosé, <i>Sexy MF</i> (Unfiltered)	750	12	\$276.00	\$23.00	\$21.85	\$20.70
2021	Scheurebe, Trocken	750	12	\$204.00	\$17.00	\$16.15	\$15.30
2021	Scheurebe <i>Fehlfarbe</i> (Unfiltered)	750	12	\$300.00	\$25.00	\$23.75	\$22.50
2022	Scheurebe <i>Fehlfarbe</i> (Unfiltered)	750	12	\$300.00	\$25.00	\$23.75	\$22.50
2021	Riesling, Trocken	750	12	\$204.00	\$17.00	\$16.15	\$15.30
2021	Riesling, <i>Kalk</i>	750	12	\$276.00	\$23.00	\$21.85	\$20.70
2020	Riesling, <i>Benn</i>	750	12	\$384.00	\$32.00	NET	NET
2021	Riesling, <i>Benn</i>	750	12	\$396.00	\$33.00	NET	NET
2020	Riesling, <i>Kirchspiel</i>	750	12	\$444.00	\$37.00	NET	NET
2021	Riesling, <i>Kirchspiel</i>	750	12	\$492.00	\$41.00	NET	NET
2020	Riesling, <i>Morstein</i>	750	12	\$516.00	\$43.00	NET	NET
2021	Riesling, <i>Morstein</i>	750	12	\$600.00	\$50.00	NET	NET
2021	Riesling, <i>Schweifströpfchen</i>	750	12	\$288.00	\$24.00	\$22.80	\$21.60
2021	Riesling, <i>Feinherb, Kirchspiel</i>	750	12	\$360.00	\$30.00	NET	NET
2021	Riesling, <i>Kabinett, Kirchspiel</i>	750	12	\$312.00	\$26.00	NET	NET
2021	Riesling, <i>Spätlese, Morstein</i>	750	12	\$528.00	\$44.00	NET	NET

WASENHAUS

STAUFEN - BADEN-WURTTENBERG

www.thesourceimports.com/producers/wasenhhaus/

Christoph Wolber and Alexander (Alex) Götze met in Burgundy while getting their enology education at the local school in Beaune. At the same time they both worked full time jobs between some of Burgundy's top biodynamic estates: Alex has spent nearly a decade between Pierre Morey (where we first met) and De Montille, where he is currently the chef de culture (the vineyard manager), and Christoph had some years at Leflaive, Bernhard van Berg, Domaine de la Vougeraie and Comte Armand. Shortly after they became roommates, they hatched a plan to return to Germany and start a new project in Baden, a wine region that sits on the east side of the Rhine Graben, across from and within sight of the Alsatian wine region, all in a valley that separates Germany's Black Forest from France's Vosge mountains.

2022	Chasselas, <i>Gutedel</i>	750	12	Allocated - Please inquire			
2021	Weissburgunder	750	12	Allocated - Please inquire			
2021	Weissburgunder, <i>Mohlin</i>	750	12	Allocated - Please inquire			
2021	Chardonnay	750	12	Allocated - Please inquire			
2021	Chardonnay, <i>Filzen</i>	750	12	Allocated - Please inquire			
2021	Spätburgunder	750	12	Allocated - Please inquire			
2022	Spätburgunder, <i>Grand Ordinaire</i>	750	12	Allocated - Please inquire			
2021	Spätburgunder, <i>Vulkan</i>	750	12	Allocated - Please inquire			
2021	Spätburgunder, <i>Bellen</i>	750	12	Allocated - Please inquire			
2021	Spätburgunder, <i>Mohlin</i>	750	12	Allocated - November Arrival - Please Inquire			

CALIFORNIA



SHELLY RAFANELLI
SONOMA

A. RAFANELLI
HEALDSBURG - SONOMA
www.arafanelliwinery.com

2021	Zinfandel, Dry Creek Valley	750	12	Allocated - Please Inquire
2019	Cabernet Sauvignon, Dry Creek Valley	750	12	Allocated - Please Inquire
2019	Cabernet Sauvignon, Dry Creek Valley	375	12	Allocated - Please Inquire

LEO STEEN
HEALDSBURG - SONOMA
www.leosteen.com

				Frontline		Discounts		
				Case	Bottle	5%	10%	
2022	Rosé of Grenache, Sonoma Valley, <i>Rose Ranch Vineyard</i>	750	12	\$228.00	\$19.00	\$18.05	\$17.10	*
2022	Chenin Blanc, Dry Creek Valley, <i>Saini</i>	750	12	\$204.00	\$17.00	\$16.15	\$15.30	
2021	Chenin Blanc, Mendocino County, <i>Peaberry - 11 bottles available</i>	750	12	\$230.00	\$19.17	\$18.21	\$17.25	
2022	Chenin Blanc, Mendocino County, <i>Peaberry</i>	750	12	\$264.00	\$22.00	\$20.90	\$19.80	
2020	Chenin Blanc, Santa Ynez Valley, <i>Jurassic Vineyard</i>	750	12	\$280.00	\$23.33	\$22.16	\$21.00	
2020	Chardonnay, Santa Cruz Mountains, <i>Bruzzone Vineyard</i>	750	12	\$324.00	\$27.00	NET	NET	
2021	Red Field Blend, Redwood Valley, <i>Casa Verde</i>	750	12	\$204.00	\$17.00	\$16.15	\$15.30	
2022	Red Field Blend, Redwood Valley, <i>Casa Verde</i>	750	12	\$204.00	\$17.00	\$16.15	\$15.30	
2019	Grenache, Dry Creek Valley, <i>Provisor Vineyard</i>	750	12	\$324.00	\$27.00	NET	NET	
2021	Cabernet Franc, Santa Cruz Mountains, <i>Ascona</i>	750	12	\$396.00	\$33.00	NET	NET	
2020	Cabernet Sauvignon, Pine Mountain, <i>Tin Cross</i>	750	12	\$552.00	\$46.00	NET	NET	
2019	Late Harvest Chenin Blanc, Sterling Ranch, SOD	500	12	\$300.00	\$25.00	NET	NET	

WENZLAU
SANTA RITA HILLS

ONLY AVAILABLE VIA THE SOURCE IN CENTRAL COAST
www.wenzlauvineyard.com

Blanc de Noirs, Santa Rita Hills, <i>Cuvée L'Inconnu</i>	750	6	Please inquire for inventory and pricing
Chardonnay, Santa Rita Hills, <i>The Drawing Board</i>	750	12	Please inquire for inventory and pricing
Chardonnay, Santa Rita Hills, <i>Estate</i>	750	12	Please inquire for inventory and pricing
Pinot Noir, Santa Rita Hills, <i>Estate</i>	750	12	Please inquire for inventory and pricing
Pinot Noir, Santa Rita Hills, <i>Estate</i>	1500	6	Please inquire for inventory and pricing

* Wines will ship via Golden State Overnight and need extra time for delivery
 ** Orders need to be placed before 11 AM for next day delivery

WHITCRAFT
SANTA BARBARA COUNTY

ONLY AVAILABLE VIA THE SOURCE IN CENTRAL COAST AND NORTHERN CALIFORNIA
www.whitcraftwinery.com/

Chardonnay	750	12	Please inquire for inventory and pricing
Pinot Noir	750	12	Please inquire for inventory and pricing
Syrah	750	12	Please inquire for inventory and pricing
Gamay	750	12	Please inquire for inventory and pricing
Lagrein	750	12	Please inquire for inventory and pricing

JANUARY CLOSEOUT PRICELIST

				Frontline Case	Frontline Bottle	10% Discount Bottle	Closeout Price - 1cs & part of 5 case order	% Discount
2014	Day Wines, Hock and Deuce, <i>Mae's Vineyard</i>	750	12		\$27.00	\$24.30	\$12.00	55.56%
2015	Day Wines, <i>Queen D</i>	750	12		\$23.33	\$21.00	\$10.00	57.14%
2014	Day Wines, <i>Running Bare, Mae's Vineyard</i>	750	12		\$30.00	\$27.00	\$12.00	60.00%
2019	Etna Barrus Contino, Etna Rosso, <i>Selezione, Orange Label</i>	750	12		\$26.00	\$23.40	\$17.00	34.62%
2018	Etna Barrus Contino, Etna Rosso, <i>Selezione, Orange Label</i>	750	12		\$26.00	\$23.40	\$17.00	34.62%
2020	Etna Barrus Contino, Etna Rosso, <i>Purple Label</i>	750	12		\$24.00	\$21.60	\$16.00	33.33%
2019	Gagnepain et Risoul Vins, A.D.N. Patrimoine Rouge	750	12	\$272.00	\$22.67	\$20.40	\$17.00	25.00%
2018	Gagnepain et Risoul Vins, Vin de France, <i>Boomerang</i>	750	12	\$224.00	\$18.67	\$16.80	\$13.00	30.36%
2015	Hajszan Neumann, Zweigelt, <i>Nussberg</i>	750	12	\$228.00	\$19.00	\$17.10	\$12.00	36.84%
2021	La Battagliola, Lambrusco Grasparossa di Castelvetro	750	12	\$192.00	\$16.00	\$14.40	\$8.00	50.00%
2013	La Madura, Saint Chinian, <i>Grand Vin</i>	750	6	\$264.00	\$29.57	\$26.61	\$16.00	45.88%
2021	Mary Taylor, Agenais, Rosé, Christopher Avi	750	12	\$120.00	\$10.00	\$9.00	\$7.51	24.90%
2017	Mary Taylor, Buzet, Rouge, Christopher Avi	750	12	\$180.00	\$15.00	\$13.50	\$11.50	23.33%
2021	Mary Taylor, Cotes du Gascogne, Olivier Gessler	750	12	\$136.00	\$11.33	\$10.20	\$9.33	17.65%
2019	Mary Taylor, Dao Branco, Lucia Ferreira	750	12	\$164.00	\$13.67	\$12.30	\$11.67	14.63%
2019	Mary Taylor, Gaillac Perle, Nathalie Larroque	750	12	\$171.00	\$14.25	\$12.83	\$11.67	18.13%
2020	Mary Taylor, Gaillac Perle, Nathalie Larroque	750	12	\$171.00	\$14.25	\$12.83	\$11.00	22.81%
2021	Mary Taylor, St. Pourcain Rosé, Sylvain Miniot	750	12	\$156.00	\$13.00	\$11.70	\$10.00	23.08%
2021	Mary Taylor, Touraine, Sauvignon Blanc, Luc Poullain	750	12	\$192.00	\$16.00	\$14.40	\$12.00	25.00%
2015	Pedro Parra y Familia, Itata, <i>Pencopolitano</i>	750	12	\$180.00	\$15.00	\$13.50	\$10.00	33.33%
2013	Quinta do Ameal, <i>Eschola</i>	750	12		\$28.00	\$25.20	\$10.00	64.29%
2016	Teres VDP Mediteranee Blanc	750	12	\$118.26	\$9.86	\$8.87	\$5.00	49.26%
2021	Teres VDP Mediteranee Rosé	750	12	\$132.00	\$11.00	\$9.90	\$5.00	54.55%
2016	Val de Caire, Blanc	750	12	\$170.82	\$14.24	\$12.81	\$8.00	43.80%
2021	Val de Caire, Rosé	750	12	\$180.00	\$15.00	\$13.50	\$8.00	46.67%
2018	Vuolo, Fiano Colli di Salerno	750	12	\$228.00	\$19.00	\$17.10	\$10.00	47.37%

All Closeout Prices are on case 1 however must be part of a 5 case mixed order

JANUARY VOLUME DISCOUNT SALE

						1 case part of a 5 case mix	2 case solid part of a 5 case mix	3 case solid & part of a 5 case mix
				Frontline Case	Frontline Bottle	10% Discount	15% Discount	20% Discount
NV	Issimo by Sorgente, Pinot Rosé, Brut	750	12	\$168.00	\$14.00	\$12.60	\$11.90	\$11.20
2021	Picchioni, Bonarda dell'Oltrepo Pavese	750	12	\$228.00	\$19.00	\$17.10	\$16.15	
NV	Richoux, Cremant de Bougogone	750	12	\$312.00	\$26.00	\$23.40	\$22.10	\$20.80
NV	Taisne Riocour, Grande Reserve	750	12	\$492.00	\$41.00	\$36.90	\$34.85	
2022	Val de Caire, Coteaux d'aix en Provence, Rosé	750	12	\$180.00	\$15.00	\$13.50	\$12.75	\$12.00
2021	Riecine, <i>Palmina</i> , Rosé	750	12	\$240.00	\$20.00	\$18.00	\$17.00	\$16.00
2022	Leo Steen, Grenache Rosé	750	12	\$228.00	\$19.00	\$17.10	\$16.15	\$15.20
2021	Arcuri, Il Marinetto, Ciro Rosato	750	12	\$276.00	\$23.00	\$20.70	\$19.55	\$18.40
2021	Brandini, Langhe Arneis, <i>Le Margherite</i>	750	12	\$216.00	\$18.00	\$16.20	\$15.30	
2020	Forteresse de Berrye, Saumur Blanc, <i>Coeur pour Coeur</i>	750	12	\$228.00	\$19.00	\$17.10	\$16.15	\$15.20
2021	Cume do Avia, <i>Arriano</i> , Branco	750	12	\$216.00	\$18.00	\$16.20	\$15.30	\$14.40
2021	Malat, Gewurtztraminer Orange	750	12	\$264.00	\$22.00	\$19.80	\$18.70	\$17.60
2021	Malat, Gelber Muskateller Orange	750	12	\$264.00	\$22.00	\$19.80	\$18.70	\$17.60
2020	Tracy & Cie, Menetou Salon Rouge, Madame Fontaynes (Pinot Noir)	750	12	\$240.00	\$20.00	\$18.00	\$17.00	
2021	Chardigny, Beaujolais Rouge, <i>Leynes</i>	750	12	\$228.00	\$19.00	\$17.10	\$16.15	\$15.20
2020	Rousset, Saint-Joseph, <i>Cotes de Rivoires</i>	750	12	\$312.00	\$26.00	\$23.40	\$22.10	\$20.80
2020	Rousset, Crozes-Hermitage, <i>Les Mejans</i>	750	12	\$312.00	\$26.00	\$23.40	\$22.10	\$20.80
2020	Picchioni, Oltrepo Pavese, <i>Solinghino</i>	750	12	\$228.00	\$19.00	\$17.10	\$16.15	
2021	Brandini, Langhe Nebbiolo, <i>Filari Corti</i>	750	12	\$252.00	\$21.00	\$18.90	\$17.85	
2022	Vinteros Bravos, Pais Volcanico	750	12	\$168.00	\$14.00	\$12.60	\$11.90	
2022	Vinteros Bravos, Pipeño Tinto	1L	12	\$168.00	\$14.00	\$12.60	\$11.90	
2018	Brandini, Barolo, La Morra	750	12	\$480.00	\$40.00	\$36.00	\$34.00	
2021	Riecine, Chianti Classico	750	12	\$312.00	\$26.00	\$23.40	\$22.10	\$20.80
2021	Cume do Avia, <i>Arriano</i> , Tinto	750	12	\$216.00	\$18.00	\$16.20	\$15.30	\$14.40
2021	Cume do Avia, <i>Colleita 9</i> , Tinto	750	12	\$264.00	\$22.00	\$19.80	\$18.70	\$17.60
2021	Arribas Wine Company, Tinto	750	12	\$216.00	\$18.00	\$16.20	\$15.30	\$14.40
2019	Silencio, Viñedos del Jamuz Rosso, <i>Las Jaras</i> (Mencia)	750	12	\$216.00	\$18.00	\$16.20	\$15.30	\$14.40
2021	Pradio, Mencia	750	12	\$264.00	\$22.00	\$19.80	\$18.70	\$17.60
2019	Tinto, <i>El Chano</i>	750	12	\$372.00	\$31.00	\$27.90	\$26.35	\$24.80

Sales Ends February 1st, 2024 - All orders must be submitted prior - Orders with special pricing will be held for a maximum of 30 days before delivery is required.